

## 120 x 70mm Metric Base Plate

#54-977



These durable and versatile breadboard mounting plates accommodate both metric and English breadboards as well as our metric line of components. Available in three sizes. Black anodized aluminum construction.

## General

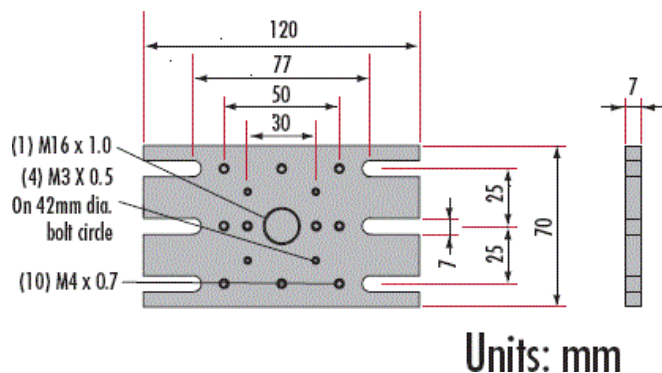
Type: Metric

## Physical & Mechanical Properties

|                  |                         |
|------------------|-------------------------|
| Length (mm):     | 120.00                  |
| Width (mm):      | 70.00                   |
| Thickness (mm):  | 7.00                    |
| Center Hole:     | M16 x 1.0               |
| Construction:    | Black Anodized Aluminum |
| Number of Slots: | 6                       |

## Threading & Mounting

Mounting Threads: (4) M3 x 0.5, (10) M4 x 0.7



May 16, 2025

To Whom It May Concern,

This document certifies that the product stated below has been reviewed as requested by Edmund Optics:

| Stock No. | Description                  |
|-----------|------------------------------|
| 54-977    | 120 x 70mm Metric Base Plate |

This item is EU RoHS (2015/863/EU) compliant without the use of exemptions.

This certification means that:

- EO's suppliers have confirmed the material composition of this product.
- EO has implemented rigorous procedures to document this compliance.
- The information provided may, or may not, be based upon actual test data, or on information from our Vendors, Raw Material Suppliers or Subcontractors.



Jay Budd, Director of Corporate Compliance

May 16, 2025

 Edmund Optics Inc. - 101 E Gloucester Pike, Barrington, NJ 08007 | 1-800-363-1992 | [Compliance@edmundoptics.com](mailto:Compliance@edmundoptics.com)



May 16, 2025

| <i>Stock No.</i> | <i>Description</i>           |
|------------------|------------------------------|
| 54-977           | 120 x 70mm Metric Base Plate |

Edmund Optics certifies that all articles included in this shipment are in compliance with the terms and conditions of this order. The company also certifies that the articles included in this shipment are in accordance to all agreed upon specifications and quality assurance provisions. Please call 1-800-363-1992 should any questions arise from this shipment.



Jeff Harvey- EVP of Operations



May 16, 2025

To Whom It May Concern,

This document certifies that the product stated below has been reviewed as requested by Edmund Optics:

| Stock No. | Description                  |
|-----------|------------------------------|
| 54-977    | 120 x 70mm Metric Base Plate |

This item does not contain any of the substances listed on the Reach SVHC list as of 21 January 2025 in quantities exceeding 0.1% weight by weight.

Please note the following:

- Entry 11 of Annex V of the REACH regulation EC 1907/2006 as amended by regulation 987/2008, exempts "non-hazardous" glass components from registration.
- Items considered to be packing materials and which do not form part of, or are not required for the operation of, the product, are not considered to be within scope of this declaration.
- EO does not routinely analyze products for substances not purposely added or specified within the design specifications, drawings and assembly procedures.

This certification means that:

- EO's suppliers have confirmed the material composition of this product.
- EO has implemented rigorous procedures to document this compliance.
- The information provided may, or may not, be based upon actual test data, or on information from our Vendors, Raw Material Suppliers or Subcontractors.

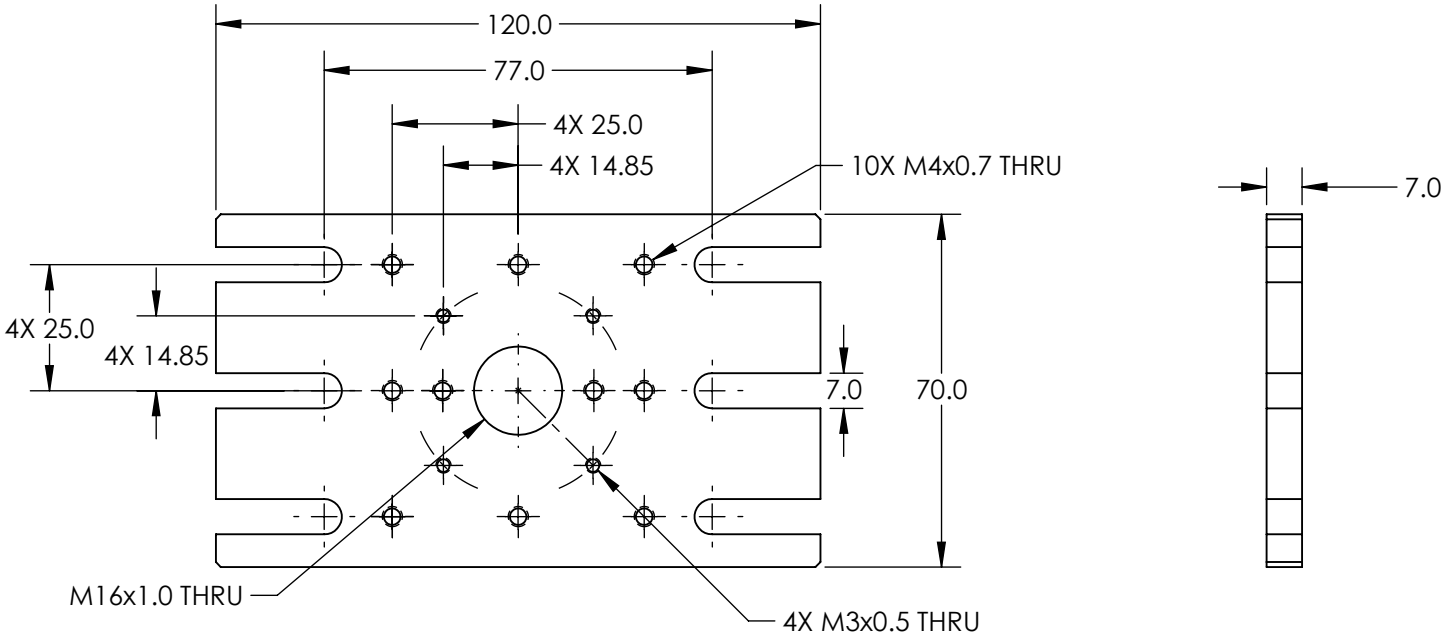


Jay Budd, Director of Corporate Compliance  
May 16, 2025

Edmund Optics Inc. - 101 E Gloucester Pike, Barrington, NJ 08007 | 1-800-363-1992 | [Compliance@edmundoptics.com](mailto:Compliance@edmundoptics.com)

NOTES:

1. INCLUDES ONE PACKAGE OF (4) M6 x 15mm LONG, FLAT POINT SET SCREWS & Ø6 WASHER



SPECIFICATIONS SUBJECT TO CHANGE WITHOUT NOTICE  
DIMENSIONS ARE FOR REFERENCE ONLY

**FOR INFORMATION ONLY:  
DO NOT MANUFACTURE  
PARTS TO THIS DRAWING**

**Edmund Optics®**

|                        |    |        |                              |              |
|------------------------|----|--------|------------------------------|--------------|
| THIRD ANGLE PROJECTION |    | TITLE  | METRIC BASE PLATE 120MMX70MM |              |
| ALL DIMS IN            | mm | DWG NO | 54977                        | SHEET 1 OF 1 |