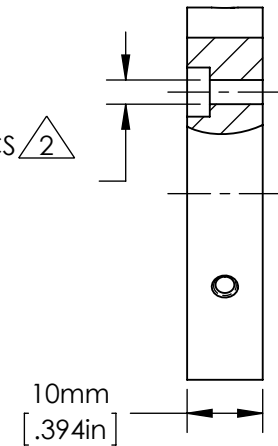


12X C'BORE FOR M3 SHCS 2  
 $\varnothing 3.2\text{mm}$  THRU [.126in]



NOTES:

1. INCLUDES 1 PACKAGE OF (3) M3 x 6mm LONG, FLAT POINT SET SCREWS TO HOLD SEPARATELY PURCHASED ACCESSORIES IN THE  $\varnothing 30$  BORE. ORDER ADDITIONAL PACKAGES USING SN 86579.

2. FOR ATTACHING SEPARATELY PURCHASED CONNECTORS OR PARTS USING M3 SHCS. (M3 SHCS ARE NOT INCLUDED WITH THIS PART).

SPECIFICATIONS SUBJECT TO CHANGE WITHOUT NOTICE  
 DIMENSIONS ARE FOR REFERENCE ONLY  
 DIMENSIONS ARE IN mm [INCHES]



Edmund Optics®

TITLE	30mm Fixed Angle Mounting Plate				
DWG NO	85622	MATERIAL	BLACK ANODIZED ALUMINUM	SHEET 1 OF 1	REV 000

Enable 3D View