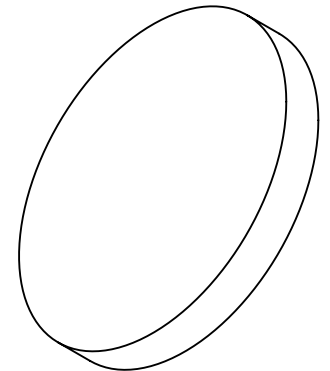
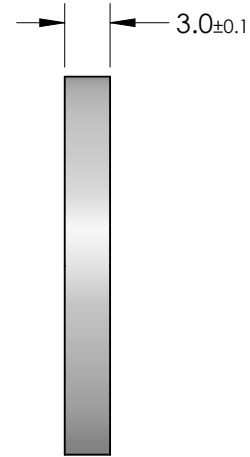
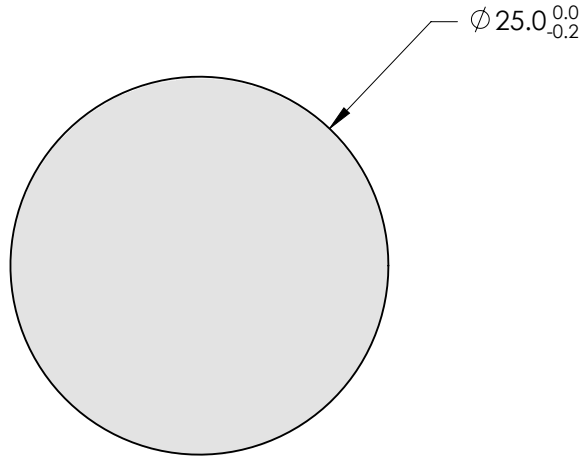



FOR INFORMATION ONLY:
DO NOT MANUFACTURE
PARTS TO THIS DRAWING



SPECIFICATION	VALUE
CUT-OFF WAVELENGTH	450nm±2%
TRANSMISSION BAND	250 - 430nm
REJECTION BAND	470 - 545nm
PASSBAND TRANSMISSION	>85%
REJECTION BAND BLOCKING	≥2.0
CLEAR APERTURE	80%
SURFACE QUALITY	40-20
TRANSMITTED WAVEFRONT	λ/4 P-V
SLOPE FACTOR	±3%
ANGLE OF INCIDENCE (DEG)	0°
COATING TYPE	Traditional Coated
SUBSTRATE	UV Grade Fused Silica

SPECIFICATIONS SUBJECT TO CHANGE WITHOUT NOTICE
 DIMENSIONS ARE FOR REFERENCE ONLY

EFL (AT 587.6nm)	NA	 Edmund Optics®	
BFL (AT 587.6nm)	NA		
ALL DIMS IN	mm	TITLE	450nm 25mm Diameter, OD 2 Shortpass Filter
		DWG NO	47286
			SHEET 1 OF 1