

NOTES:

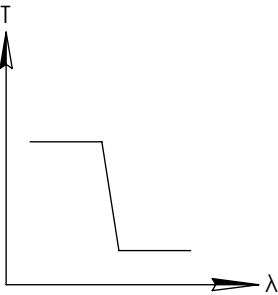
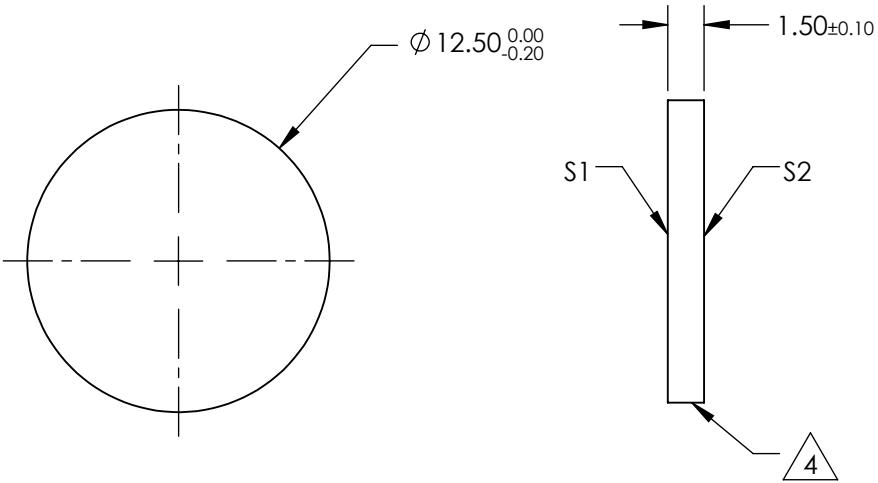
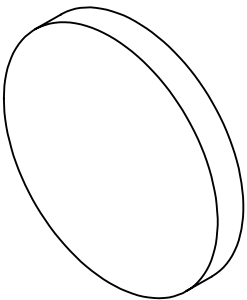
- 1. SUBSTRATE
- 2. SURFACE S2 TO BE PARALLEL WITH SURFACE S1 TO WITHIN ± 3 arcsec
- 3. COATING (APPLY ACROSS COATING APERTURE)
DURABILITY:
PERFORMANCE SPECIFICATIONS:
T(avg): $>85\%$ @ AOI 0° FROM 250 - 455nm
T(avg): $<1\%$ @ AOI 0° FROM 495 - 570nm
T(avg): $\approx 50\%$ FOR AOI 0° @ 475nm $\pm 2\%$

S2: SINGLE LAYER MgF2

4. FINE GRIND SURFACE

- 5. POWER, IRREGULARITY, AND SURFACE QUALITY SPECIFICATIONS
APPLY ACROSS CLEAR APERTURE
- 6. TRANSMITTED WAVEFRONT DISTORTION @ P-V @ 632.8nm $1/10 \lambda$
- 7. ROHS COMPLIANT

FOR INFORMATION ONLY:
DO NOT MANUFACTURE
PARTS TO THIS DRAWING



SHORTPASS FILTER

SPECIFICATIONS SUBJECT TO CHANGE WITHOUT NOTICE
DIMENSIONS ARE FOR REFERENCE ONLY

| Rev. A | S1 | S2 |
|-----------------|----------------------|----------------------|
| SHAPE | PLANO | PLANO |
| SURFACE QUALITY | 40-20 | 40-20 |
| CLEAR APERTURE | Ø10 | Ø10 |
| BEVEL | PROTECTIVE AS NEEDED | PROTECTIVE AS NEEDED |

Edmund Optics®



ALL DIMS IN mm

| | | | |
|--------|---------------------------------------|-------|--------|
| TITLE | OD2, Ø12.5mm, 475nm, SHORTPASS FILTER | | |
| DWG NO | 64593 | SHEET | 1 OF 1 |