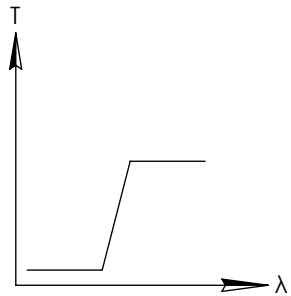
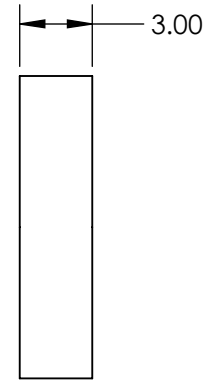
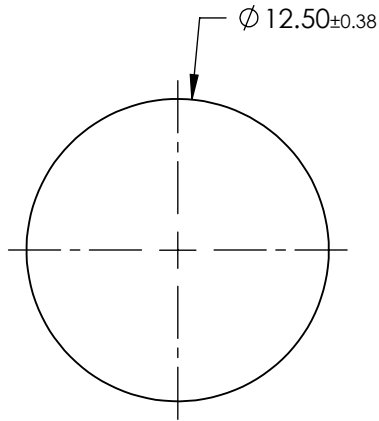
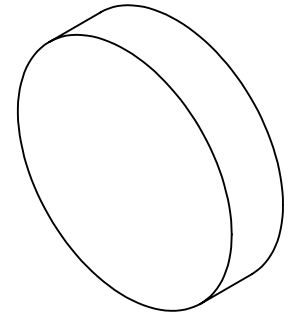


**FOR INFORMATION ONLY:
DO NOT MANUFACTURE
PARTS TO THIS DRAWING**



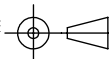
LONGPASS FILTER

SPECIFICATIONS SUBJECT TO CHANGE WITHOUT NOTICE
DIMENSIONS ARE FOR REFERENCE ONLY

| REV. A | VALUE |
|-----------------------------------|----------------------|
| SHAPE | PLANO |
| SPECTRAL TRANSMITTANCE $t_p(\%)$ | 99 |
| PASSBAND LIMIT λ_p1 (nm) | 400 |
| CUT-OFF POSITION λ_c (nm) | 300 ± 6 |
| STOPBAND LIMIT λ_s (nm) | 250 |
| WAVELENGTH | UV |
| BEVEL | PROTECTIVE AS NEEDED |



THIRD ANGLE
PROJECTION



TITLE

$\varnothing 12.5\text{mm}$, SCHOTT N-WG-295 LONGPASS
FILTER

ALL DIMS IN

mm

DWG NO

46416

SHEET
1 OF 1