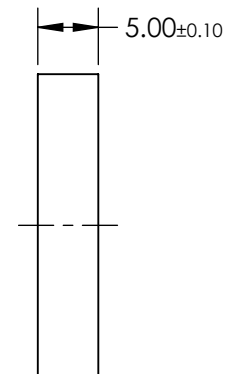
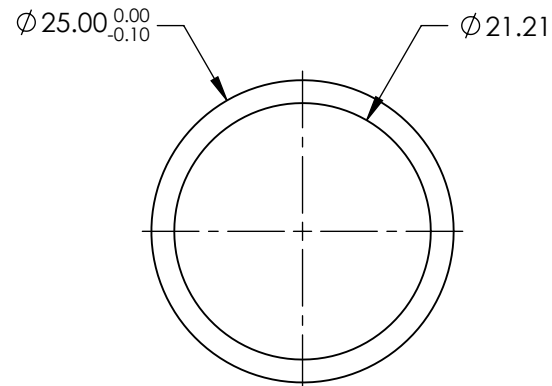
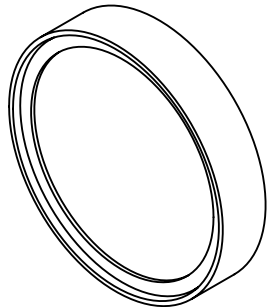


NOTES:


1. CONSTRUCTION: MOUNTED IN BLACK ANODIZED RING
2. COATING (APPLY ACROSS COATING APERTURE)
DURABILITY: MIL-C-48497A
PERFORMANCE SPECIFICATIONS:
CWL: 514.5
FWHM: 25.7
REFLECTION %: >99
TRANSMISSION %: >90
3. POWER, IRREGULARITY, AND SURFACE QUALITY SPECIFICATIONS
APPLY ACROSS CLEAR APERTURE
4. TRANSMITTED WAVEFRONT DISTORTION RMS@ <1λ
5. ROHS COMPLIANT



**FOR INFORMATION ONLY:
DO NOT MANUFACTURE
PARTS TO THIS DRAWING**

SPECIFICATIONS SUBJECT TO CHANGE WITHOUT NOTICE
DIMENSIONS ARE FOR REFERENCE ONLY



	S1	S2	<div>THIRD ANGLE PROJECTION</div> 		<div>TITLE</div> <div>OD4, Ø25mm, 514.5nm, NOTCH FILTER</div>		
SHAPE	PLANO	PLANO					
SURFACE QUALITY	60-40	60-40					
CLEAR APERTURE	Ø21.21	Ø21.21	ALL DIMS IN	mm	DWG NO	67118	SHEET 1 OF 1