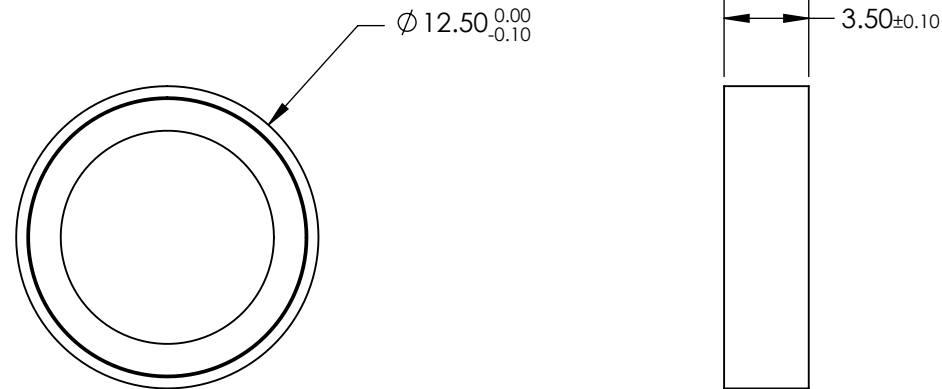
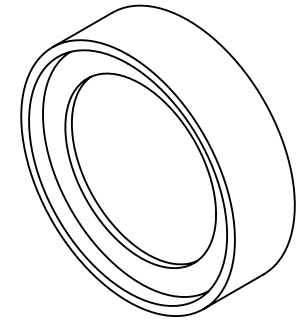


NOTES:

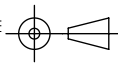
1. SUBSTRATE
2. SURFACE S2 TO BE PARALLEL WITH SURFACE S1 TO WITHIN 10 ARCSEC
3. COATING (APPLY ACROSS CLEAR APERTURE)  
 PHYSICAL DURABILITY: MIL-C-48497A  
 ENVIRONMENTAL DURABILITY: MIL-STD-810F  
 Tavg ≥93% @ 494.3 - 1100.8nm
4. FINE GROUND SURFACE
5. POWER, IRREGULARITY, AND SURFACE QUALITY SPECIFICATIONS APPLY  
 ACROSS CLEAR APERTURE
6. TRANSMITTED WAVEFRONT DISTORTION RMS @ <math>\lambda/4</math> @ 633nm
7. RoHS COMPLIANT

**FOR INFORMATION ONLY:  
 DO NOT MANUFACTURE  
 PARTS TO THIS DRAWING**




SPECIFICATIONS SUBJECT TO CHANGE WITHOUT NOTICE  
 DIMENSIONS ARE FOR REFERENCE ONLY

REV. A	S1	S2
SHAPE	PLANO	PLANO
REJECTION WAVELENGTH	394 - 488	394 - 488
SURFACE QUALITY	60-40	60-40
CLEAR APERTURE	$\varnothing 10$	$\varnothing 10$
BEVEL	PROTECTIVE AS NEEDED	PROTECTIVE AS NEEDED

THIRD ANGLE PROJECTION 

ALL DIMS IN mm

 **Edmund Optics®**

TITLE:  $\varnothing 12.5\text{mm}$ , 492.9nm, RAMAN EDGE FILTER

DWG NO: 86223

SHEET 1 OF 1