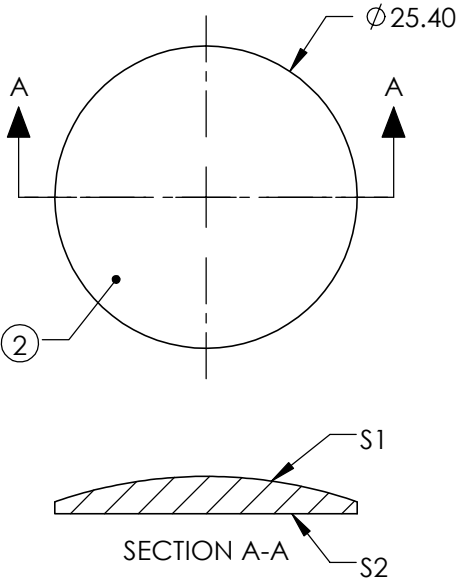
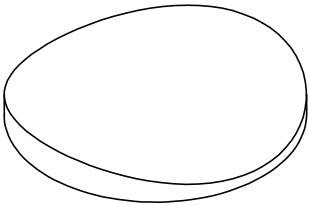



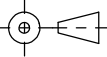
NOTES:

- 1. SUBSTRATE:
GRADE A FINE ANNEALED
- ②. COATING (APPLY ACROSS COATING APERTURE)
R(ABS) ≤ 1.5% FROM 750-800nm @ 0° AOI
R(ABS) ≤ 1.0% FROM 800-1550nm @ 0° AOI
R(AVG) ≤ 0.7% FROM 750-1550nm @ 0° AOI
- 3. CENTERING TOLERANCE (AT 587.6nm):
PLANO AXIS WEDGE: < 5 ARCMIN
POWER AXIS WEDGE: < 5 ARCMIN
- △. FINE GRIND SURFACE
- 5. POWER, IRREGULARITY, AND SURFACE QUALITY
SPECIFICATIONS APPLY ACROSS CLEAR APERTURE
- 6. FOCAL LENGHT (EFL): 75nm
BACK FOCAL LENGTH (BFL): 72.93nm
- 7. RoHS COMPLIANT



**FOR INFORMATION ONLY:
DO NOT MANUFACTURE
PARTS TO THIS DRAWING**

SPECIFICATIONS SUBJECT TO CHANGE WITHOUT NOTICE
DIMENSIONS ARE FOR REFERENCE ONLY

	S1	S2				
SHAPE	CONVEX	PLANO				
SURFACE QUALITY	40 - 20	40 - 20				
CLEAR APERTURE	Ø22.86	Ø22.86	TITLE			
BEVEL	PROTECTIVE AS NEEDED	PROTECTIVE AS NEEDED	ALL DIMS IN	mm	DWG NO	SHEET 1 OF 1
					34632	

LENS PCX CYL Ø25.4 x 75 EFL NIR II