

NOTES:

1. SUBSTRATE:  
N-BK7

2. COATING (APPLY ACROSS COATING APERTURE)  
S1: Protected Aluminum (400-2000nm)  
R(AVG) >85% @ 400 - 700nm  
R(AVG) >90% @ 400 - 2000nm

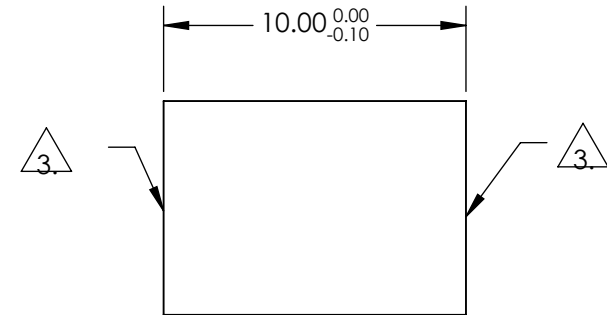
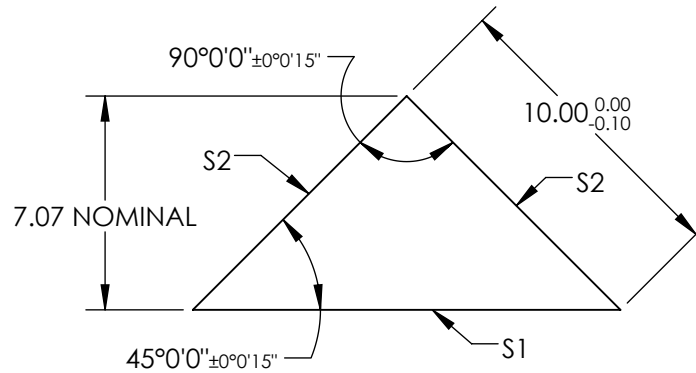
DAMAGE THRESHOLD,  
TYPICAL: 0.3 J/cm<sup>2</sup> @ 10ns @ 532nm & 1064nm

S2: VIS 0°  
R(AVG) ≤0.4% @ 425 - 675nm

DAMAGE THRESHOLD,  
TYPICAL: 5 J/cm<sup>2</sup> @ 10ns @ 532nm

3. FINE GRIND SURFACE

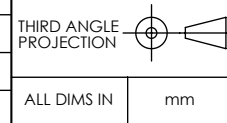
4. RoHS COMPLIANT



**FOR INFORMATION ONLY:  
DO NOT MANUFACTURE  
PARTS TO THIS DRAWING**

SPECIFICATIONS SUBJECT TO CHANGE WITHOUT NOTICE  
DIMENSIONS ARE FOR REFERENCE ONLY

REV. A	S1	S2
SHAPE	PLANO	PLANO
SURFACE QUALITY	40-20	40-20
CLEAR APERTURE	12.73 x 9.00	9.00 x 9.00
COATING APERTURE	12.73 x 9.00	9.00 x 9.00
SURFACE FLATNESS	λ/8	λ/8
BEVEL	PROTECTIVE AS NEEDED	PROTECTIVE AS NEEDED



ALL DIMS IN

mm

**EO**® Edmund Optics®

TITLE	10mm, Al & VIS 0° Coated, N-BK7 High Tolerance RA Prism
DWG NO	47594
SHEET	1 OF 1