

NOTES:

1. SUBSTRATE:
N-BK7
2. INCIDENT AND REFLECTED BEAMS SHALL BE PARALLEL TO WITHIN 10 ARCSEC
3. COATING (APPLY ACROSS COATING APERTURE)

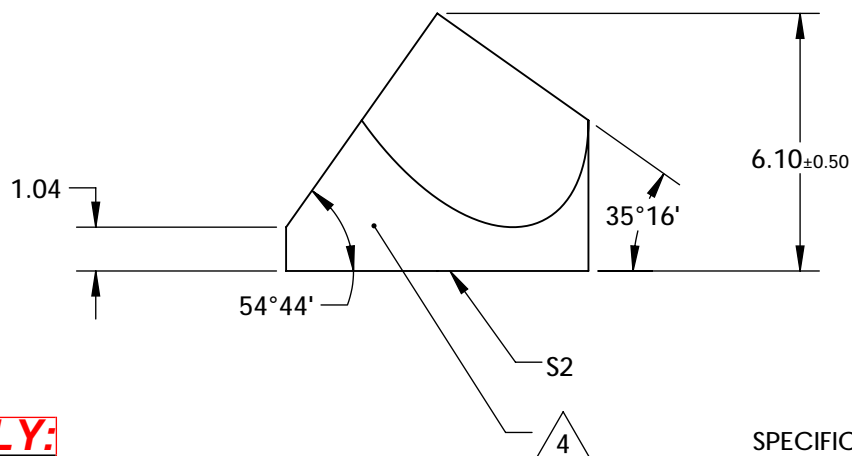
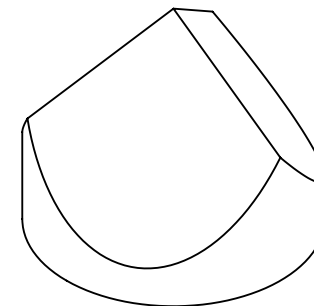
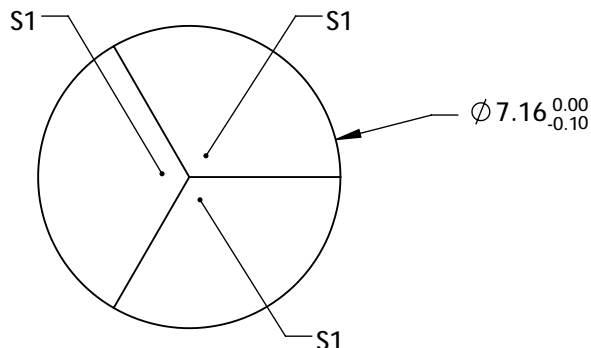
S1: SILVER WITH PROTECTED OVERCOAT (BLACK OVERPAINT)
 $R(ABS) > 97\%$ FROM 400 - 2500nm @ 0° AOI
 $R(AVG) > 98\%$ FROM 400 - 2500nm @ 0° AOI

S2: VIS 0°
 $R(AVG) \leq 0.4\%$ @ 425 - 675nm

4. FINE GRIND SURFACE

5. ROHS: COMPLIANT

Note: Protective Overcoat Increases diameter by 30-60µm



**FOR INFORMATION ONLY:
DO NOT MANUFACTURE
PARTS TO THIS DRAWING**

SPECIFICATIONS SUBJECT TO CHANGE WITHOUT NOTICE
 DIMENSIONS ARE FOR REFERENCE ONLY

REV A	S1 & S2
SURFACE FLATNESS	$\lambda/8$
SURFACE QUALITY	60-40
WAVELENGTH RANGE	425 - 675 nm
BEVEL	PROTECTED AS NEEDED



ALL DIMS IN mm

EO® Edmund Optics®

TITLE

7.16mm SILVER AND VIS 0° COATED, CORNER
CUBE PRISM

DWG NO

48605

SHEET
1 OF 1