

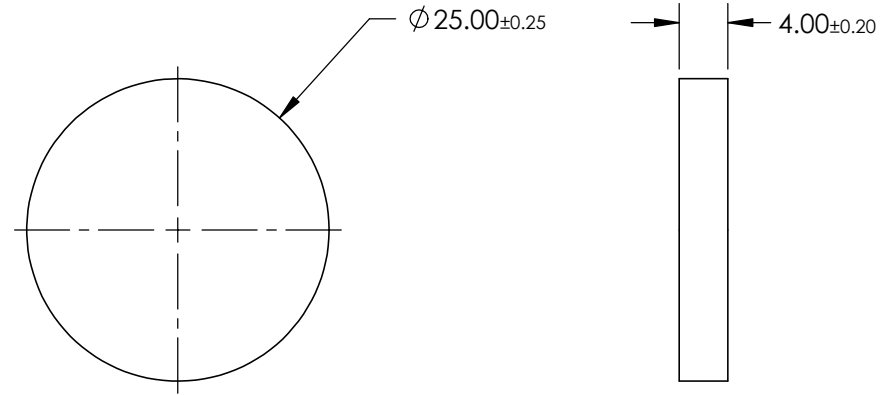
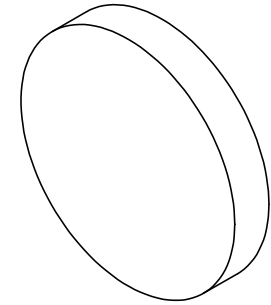
NOTES:

1. SUBSTRATE:
2. SURFACE S2 TO BE PARALLEL WITH S1 TO WITHIN <1 ARCMIN
3. COATING (APPLY ACROSS CLEAR APERTURE)
 PERFORMANCE SPECIFICATIONS:
 R(ABS) = 50% @ 520nm; R(AVG) > 98% @ 550 - 725nm
 S1: MULTI-LAYER DICHROIC
 S2: SINGLE LAYER MgF2

 4. FINE GRIND SURFACE

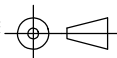
5. POWER, IRREGULARITY, AND SURFACE QUALITY
 SPECIFICATIONS APPLY ACROSS CLEAR APERTURE
6. ROHS COMPLIANT

**FOR INFORMATION ONLY:
DO NOT MANUFACTURE
PARTS TO THIS DRAWING**



SPECIFICATIONS SUBJECT TO CHANGE WITHOUT NOTICE
 DIMENSIONS ARE FOR REFERENCE ONLY

	S1	S2
SHAPE	PLANO	PLANO
CUT-OFF WAVELENGTH	520nm	520nm
SURFACE QUALITY	60-40	60-40
SURFACE FLATNESS	$\lambda/4$	$\lambda/4$
COATING TYPE	TRADITIONAL COATED	TRADITIONAL COATED
BEVEL	PROTECTED AS NEEDED	PROTECTED AS NEEDED

THIRD ANGLE PROJECTION 

ALL DIMS IN mm

 **Edmund Optics®**

TITLE: $\phi 25\text{mm}$, 45° YELLOW DICHROIC FILTER

DWG NO: 66246

SHEET 1 OF 1