

NOTES:

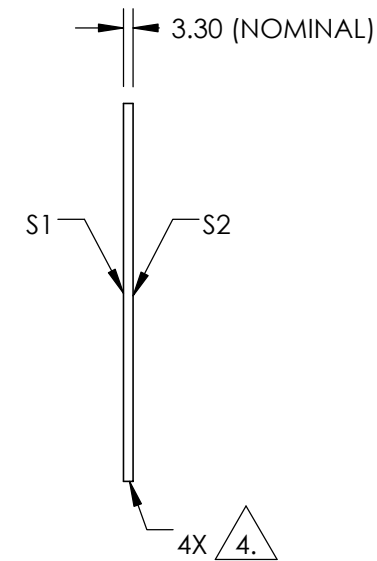
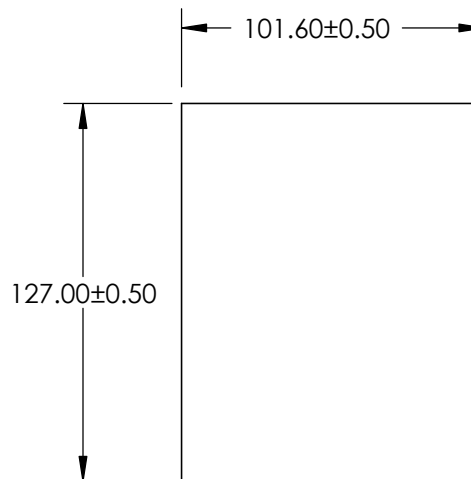
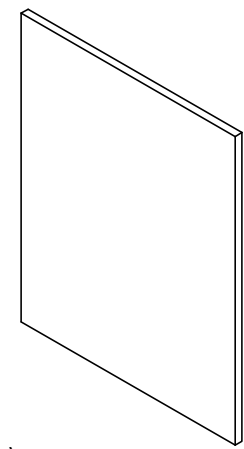
1. SUBSTRATE MATERIAL:
BOROFLOAT®
2. CLEAR APERTURE AND COATING APERTURE
ARE CENTERED ON SURFACES
3. COATING (APPLY ACROSS CLEAR APERTURE)
S1: R(avg) >90 @ 750 - 1125nm
T(avg) >85 @ 425-675nm

S2:NONE

4. FINE GRIND SURFACE

5. POWER, IRREGULARITY, AND SURFACE QUALITY
SPECIFICATIONS APPLY ACROSS CLEAR APERTURE

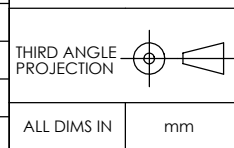
6. ROHS COMPLIANT



**FOR INFORMATION ONLY:
DO NOT MANUFACTURE
PARTS TO THIS DRAWING**

SPECIFICATIONS SUBJECT TO CHANGE WITHOUT NOTICE
DIMENSIONS ARE FOR REFERENCE ONLY

REV. 001	S1	S2
SHAPE	PLANO	PLANO
SURFACE QUALITY	80-50	80-50
SURFACE FLATNESS	4 - 6λ	4 - 6λ
CLEAR APERTURE	90.90 x 114.30	90.90 x 114.30
BEVEL	PROTECTIVE AS NEEDED	PROTECTIVE AS NEEDED



EO® **Edmund Optics**®

TITLE	101.6 x 127.0mm, 45° AOI, Hot Mirror		
DWG NO	43958	SHEET	1 OF 1