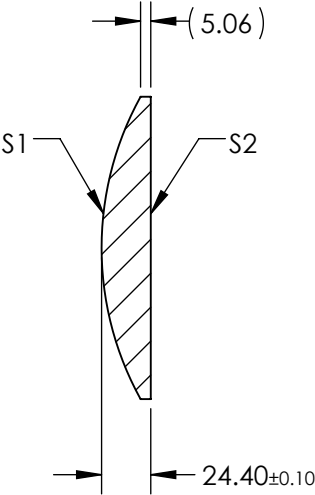
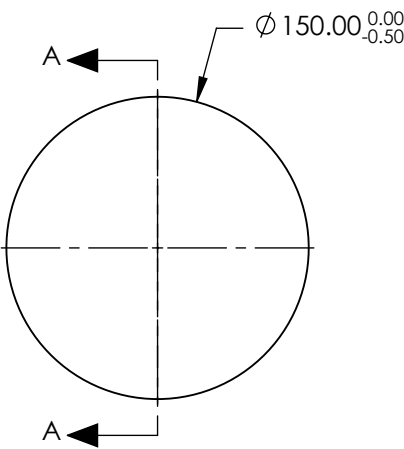


NOTES:

1. SUBSTRATE MATERIAL:
N-BK7
2. COATING (APPLY ACROSS CLEAR APERTURE)


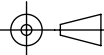
S1: NONE
S2: NONE
3. FINE GROUND EDGES
4. RoHS COMPLIANT



SECTION A-A

**FOR INFORMATION ONLY:
DO NOT MANUFACTURE
PARTS TO THIS DRAWING**

SPECIFICATIONS SUBJECT TO CHANGE WITHOUT NOTICE
DIMENSIONS ARE FOR REFERENCE ONLY

			EFL	300	 Edmund Optics®	
			BFL	284		
REV. A	S1	S2				
SHAPE	CONVEX	PLANO				
RADIUS	155	∞				
CLEAR APERTURE	Ø146.00	Ø146.00				
BEVEL	PROTECTIVE AS NEEDED	PROTECTIVE AS NEEDED				
			THIRD ANGLE PROJECTION		TITLE	150mm DIA X 300mm FOCAL LENGTH, PCX CONDENSER LENS
			ALL DIMS IN	mm	DWG NO	27509
						SHEET 1 OF 1