

NOTES:

1. SUBSTRATE MATERIAL: BOROFLOAT®

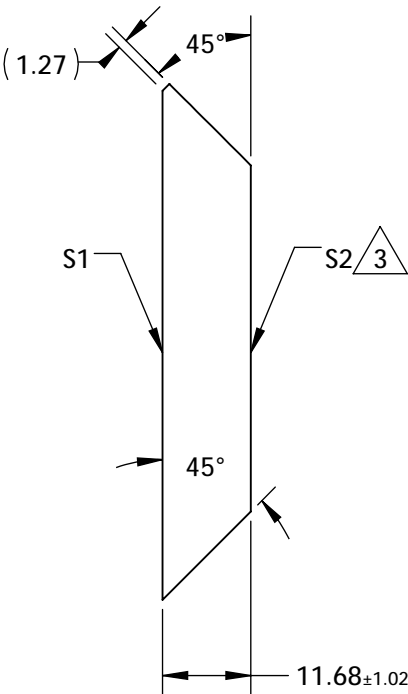
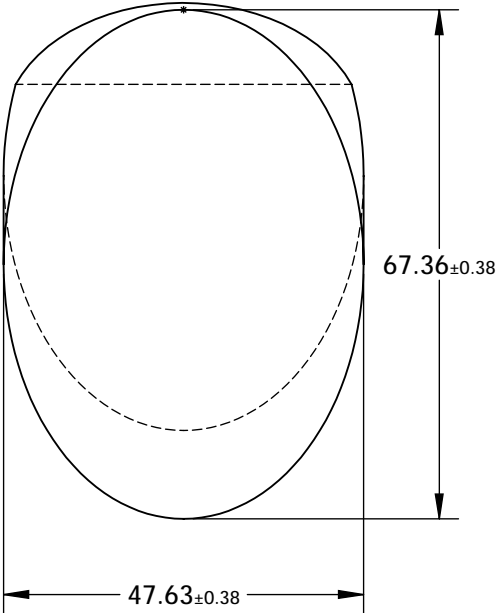
2. COATING (APPLY ACROSS CLEAR APERTURE)

S1: R(AVG) >95% @ 450 - 650nm

S2: NONE

3. FINE GRIND SURFACE

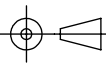
4. RoHS COMPLIANT



**FOR INFORMATION ONLY:  
DO NOT MANUFACTURE  
PARTS TO THIS DRAWING**

SPECIFICATIONS SUBJECT TO CHANGE WITHOUT NOTICE  
DIMENSIONS ARE FOR REFERENCE ONLY

	S1	S2
TYPE	PLANO	PLANO
CLEAR APERTURE (mm)	60.63 x 42.88	N/A
SURFACE QUALITY	60-40	N/A
SURFACE FLATNESS	λ/8	N/A
BEVEL	PROTECTIVE AS NEEDED	PROTECTIVE AS NEEDED

THIRD ANGLE PROJECTION 		Edmund Optics®	
TITLE		47.63mm, MINOR AXIS ENHANCED ALUMINUM ELLIPTICAL MIRROR	
ALL DIMS IN	mm	DWG NO	32135
		SHEET 1 OF 1	