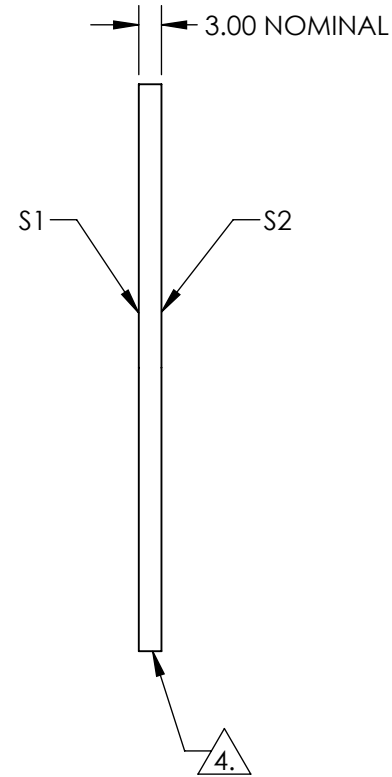
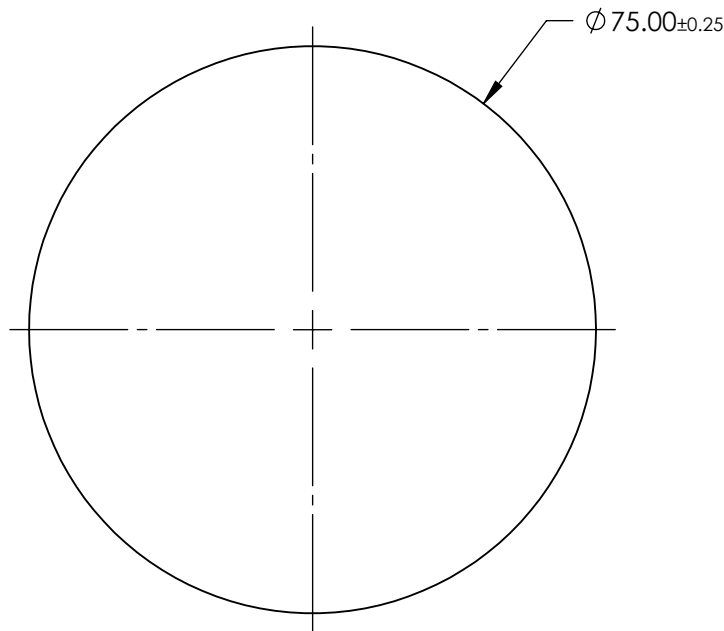
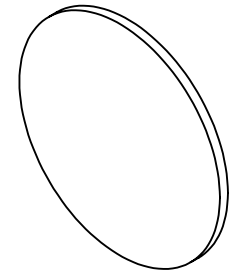


NOTES:

1. SUBSTRATE: Float Glass
2. ROHS COMPLIANT
3. COATING (APPLY ACROSS CLEAR APERTURE)

S1: Ravg ≥95% @ 450 - 650nm @ 45°
 S2: NONE

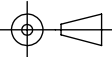
 FINE GRIND SURFACE



**FOR INFORMATION ONLY:
 DO NOT MANUFACTURE
 PARTS TO THIS DRAWING**

SPECIFICATIONS SUBJECT TO CHANGE WITHOUT NOTICE
 DIMENSIONS ARE FOR REFERENCE ONLY

 **Edmund Optics®**

| | | | | | | | |
|------------------|---------------------|---------------------|--|----|--------|---|-----------------|
| | S1 | S2 | THIRD ANGLE PROJECTION  | | TITLE | 75mm Dia Enhanced Aluminum, 4-6λ Mirror | |
| SURFACE QUALITY | 60-40 | 60-40 | ALL DIMS IN | mm | DWG NO | 45616 | SHEET 1 OF 1 |
| SURFACE FLATNESS | 4 - 6λ | 4 - 6λ | | | | | |
| BEVEL | PROTECTED AS NEEDED | PROTECTED AS NEEDED | | | | | |