

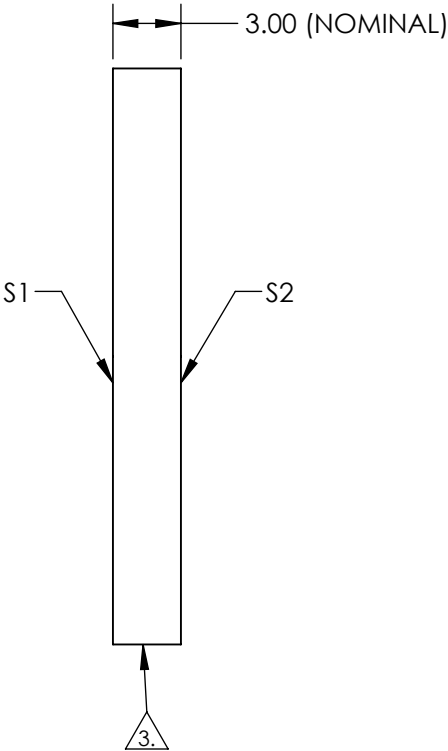
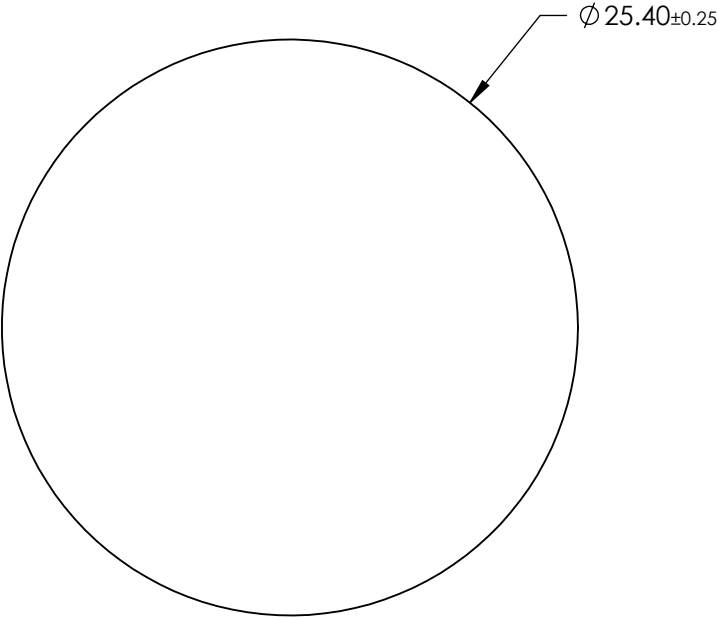
NOTES:

1. SUBSTRATE: Float Glass
2. COATING (APPLY ACROSS CLEAR APERTURE)

S1: Enhanced Aluminum (450-650nm)
R(AVG) ≥95% @ 450 - 650nm @ 45°

S2: NONE
3.

EDGES GROUND
4. RoHS COMPLIANT



FOR INFORMATION ONLY:
DO NOT MANUFACTURE
PARTS TO THIS DRAWING

SPECIFICATIONS SUBJECT TO CHANGE WITHOUT NOTICE
DIMENSIONS ARE FOR REFERENCE ONLY

	S1	S2
SHAPE	PLANO	PLANO
SURFACE QUALITY	60-40	N/A
SURFACE FLATNESS	4 - 6λ	N/A
CLEAR APERTURE	Ø 24.13	N/A
BEVEL	PROTECTED AS NEEDED	PROTECTED AS NEEDED

THIRD ANGLE
PROJECTION

ALL DIMS INmm

Edmund Optics®

TITLE

25.4mm Dia Enhanced Aluminum, 4-6λ Mirror

DWG NO

83485

SHEET

1 OF 1