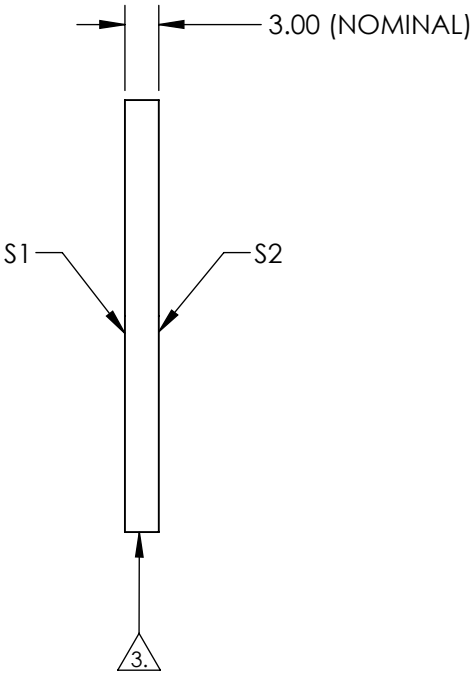
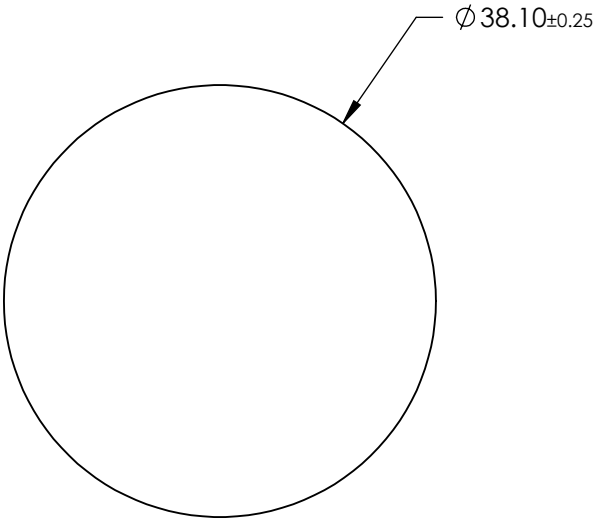



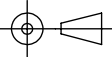
NOTES:

- 1. SUBSTRATE: Float Glass
- 2. COATING (APPLY ACROSS CLEAR APERTURE)  
S1: Enhanced Aluminum (450-650nm)  
R(AVG) ≥95% @ 450 - 650nm @ 45°  
  
S2: NONE
- 3. EDGES GROUND
- 4. RoHS COMPLIANT



**FOR INFORMATION ONLY:  
DO NOT MANUFACTURE  
PARTS TO THIS DRAWING**

SPECIFICATIONS SUBJECT TO CHANGE WITHOUT NOTICE  
DIMENSIONS ARE FOR REFERENCE ONLY

	S1	S2	 Edmund Optics®			
SHAPE	PLANO	PLANO				
SURFACE QUALITY	60-40	N/A	 THIRD ANGLE PROJECTION	TITLE		38.1mm Dia Enhanced Aluminum, 4-6λ Mirror
SURFACE FLATNESS	4 - 6λ	N/A		DWG NO		83487
CLEAR APERTURE	Ø 36.20	N/A		ALL DIMS IN		mm
BEVEL	PROTECTED AS NEEDED	PROTECTED AS NEEDED				SHEET 1 OF 1