

NOTES:

- 1. SUBSTRATE: N-BK7
- 2. COATING (APPLY ACROSS CLEAR APERTURE)

S1: ALUMINUM WITH MULTILAYER OVERCOAT
R(AVG) > 95% FROM 450-650nm @ 0° AOI

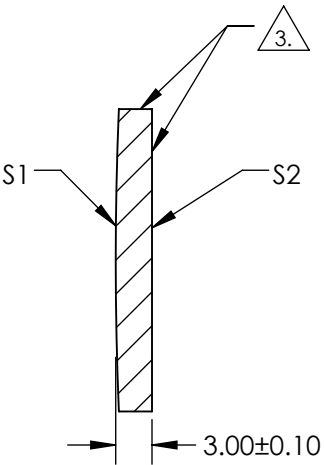
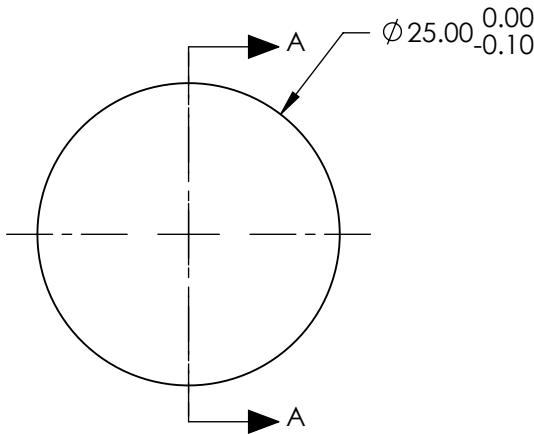
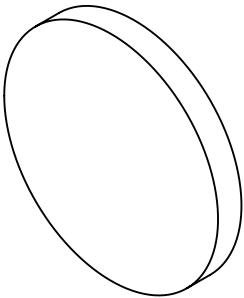
S2: NONE

3. FINE GRIND SURFACE

- 4. POWER, IRREGULARITY, AND SURFACE QUALITY SPECIFICATIONS
APPLY ACROSS CLEAR APERTURE

- 5. ROHS COMPLIANT

**FOR INFORMATION ONLY:
DO NOT MANUFACTURE
PARTS TO THIS DRAWING**



SECTION A-A

SPECIFICATIONS SUBJECT TO CHANGE WITHOUT NOTICE
DIMENSIONS ARE FOR REFERENCE ONLY

| | S1 | S2 |
|------------------------|----------------------|----------------------|
| SHAPE | CONVEX | PLANO |
| RADIUS | 300mm | N/A |
| SURFACE QUALITY | 60-40 | N/A |
| FOCAL LENGTH TOLERANCE | ±2% | N/A |
| BEVEL | PROTECTIVE AS NEEDED | PROTECTIVE AS NEEDED |



ALL DIMS IN mm

Edmund Optics®

TITLE

Ø25mm, -150mm FL ENHANCED ALIUMINUM,
CONVEX MIRROR

DWG NO

87670

SHEET
1 OF 1