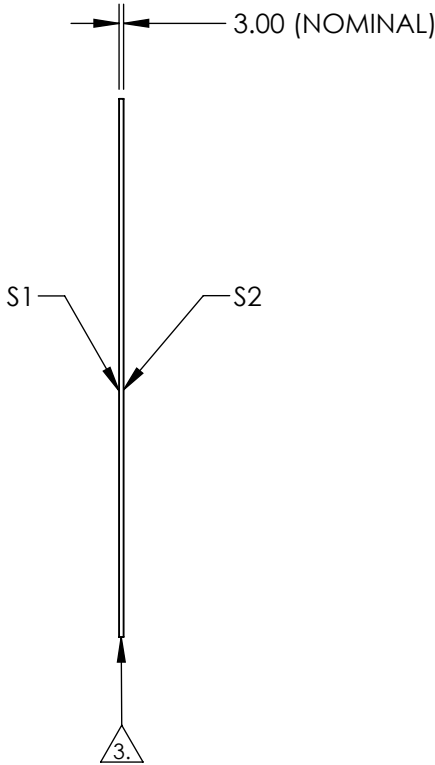
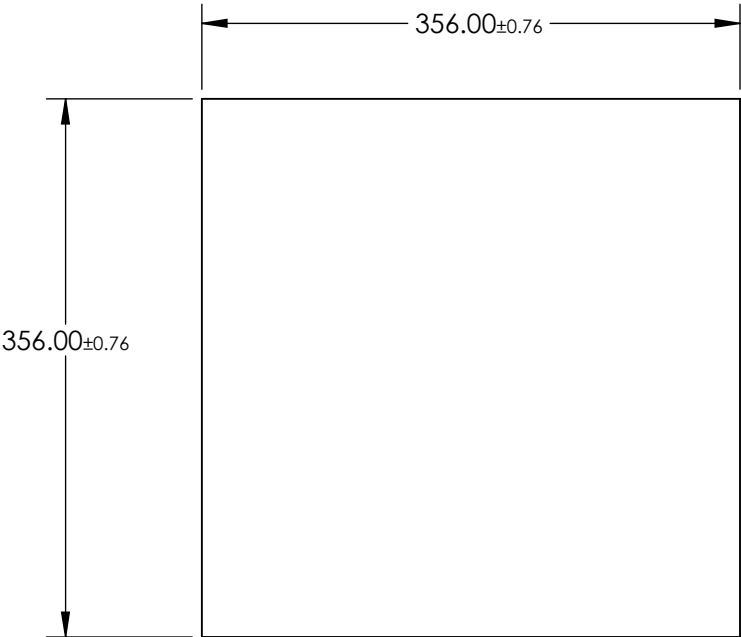


NOTES:

1. SUBSTRATE: Float Glass
2. COATING (APPLY ACROSS CLEAR APERTURE)
S1: Protected Aluminum (400-700nm)
R(AVG) >85% @ 400 - 700nm @ 45°
- S2: NONE

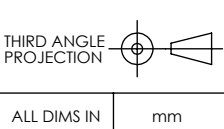
3. SEAMED EDGES
4. RoHS COMPLIANT



**FOR INFORMATION ONLY:
DO NOT MANUFACTURE
PARTS TO THIS DRAWING**

SPECIFICATIONS SUBJECT TO CHANGE WITHOUT NOTICE
DIMENSIONS ARE FOR REFERENCE ONLY

	S1	S2
SHAPE	PLANO	PLANO
SURFACE QUALITY	80-50	N/A
SURFACE FLATNESS	4 - 6λ	N/A
CLEAR APERTURE	Ø 320.4 x 320.4	N/A
BEVEL	PROTECTED AS NEEDED	PROTECTED AS NEEDED



EO® Edmund Optics®

TITLE	356 x 356mm, 4-6λ Mirror		
DWG NO	46655	SHEET 1 OF 1	