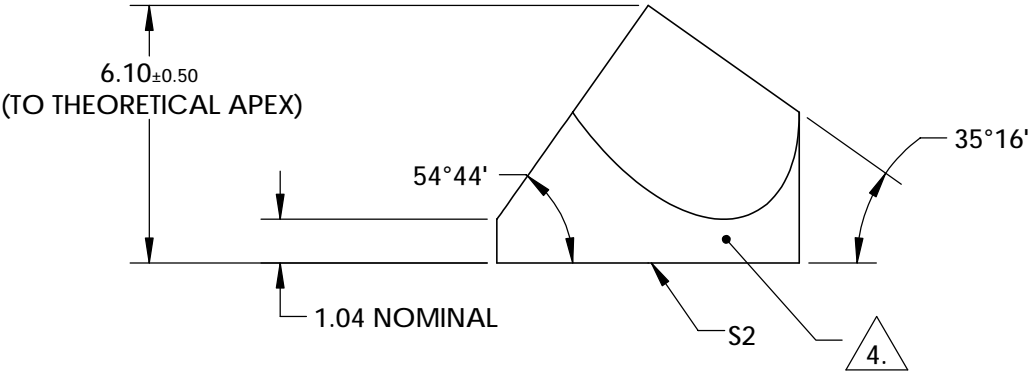
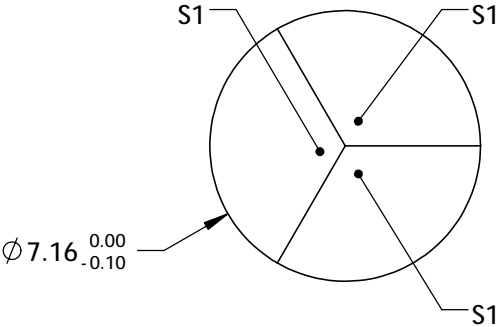
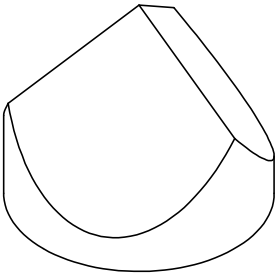



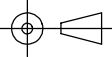
NOTES:

- 1. SUBSTRATE : FUSED SILICA
- 2. BLACK OVERPAINT IS 30-60 μm THICK
- 3. COATING (APPLY ACROSS COATING APERTURE)  
S1: ALUMINUM WITH PROTECTED OVERCOAT  
R(AVG)>85% FROM 400-700nm, @ 45° AOI
- S2: UNCOATED
- 4. FINE GRIND SURFACE
- 5. ROHS COMPLIANT



**FOR INFORMATION ONLY:  
DO NOT MANUFACTURE  
PARTS TO THIS DRAWING**

SPECIFICATIONS SUBJECT TO CHANGE WITHOUT NOTICE  
DIMENSIONS ARE FOR REFERENCE ONLY

REV A	S1 & S2	 <b>Edmund Optics®</b>			
SURFACE FLATNESS	λ/10				
SURFACE QUALITY	20-10		TITLE		7.16mm ALUMINUM COATED, FUSED SILICA CORNER CUBE
WAVELENGTH RANGE	400 - 700 nm		DWG NO		49012
ANGLE TOL. (arcsec)	10		SHEET		1 OF 1
BEVEL	PROTECTED AS NEEDED		ALL DIMS IN		mm