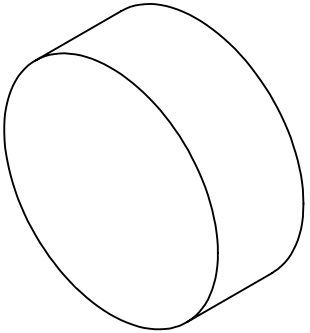
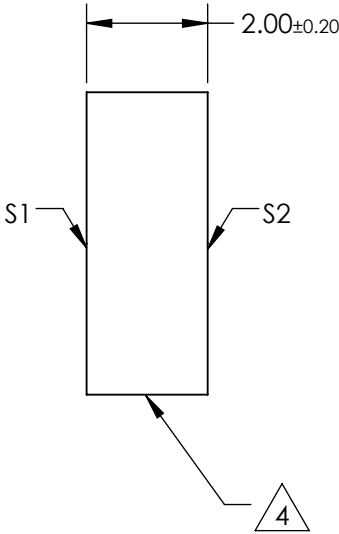
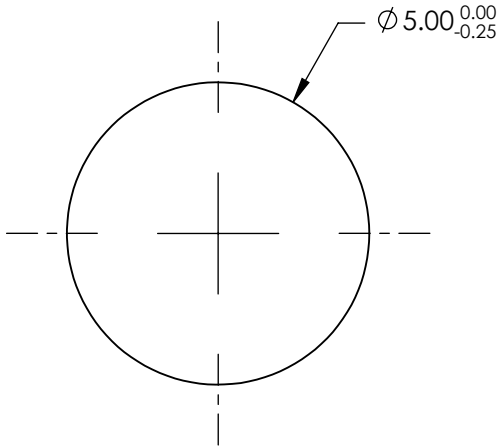


NOTES:

- 1. SUBSTRATE:
N-BK7
- 2. S2 TO BE PARALLEL WITH S1 TO <1 ARCMIN
- 3. COATING (APPLY ACROSS CLEAR APERTURE)
S1 & S2: RABS ≤0.25% @ 880nm
RAVG ≤1.25% @ 400 - 870 nm
RAVG ≤1.25% @ 890 - 1000nm


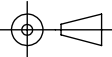
4. FINE GRIND SURFACE

- 5. RoHS COMPLIANT
- 6. SURFACE FLATNESS (P-V):
λ/4 (per inch over clear aperture)



**FOR INFORMATION ONLY:
DO NOT MANUFACTURE
PARTS TO THIS DRAWING**

SPECIFICATIONS SUBJECT TO CHANGE WITHOUT NOTICE
DIMENSIONS ARE FOR REFERENCE ONLY

| | | | | | | |
|-----------------|----------------------|----------------------|--|-------|--|--------------|
| | S1 | S2 |  Edmund Optics® | | | |
| SHAPE | PLANO | PLANO |  | TITLE | 5mm DIA., 2mm THICK, VIS-NIR COATED λ/4 N-BK7 WINDOW | |
| SURFACE QUALITY | 60-40 | 60-40 | | | | |
| CLEAR APERTURE | Ø4.00 | Ø4.00 | ALL DIMS IN | mm | DWG NO | 48448 |
| BEVEL | PROTECTIVE AS NEEDED | PROTECTIVE AS NEEDED | | | | SHEET 1 OF 1 |