

NOTES:

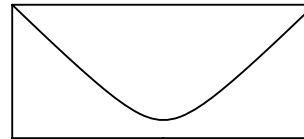
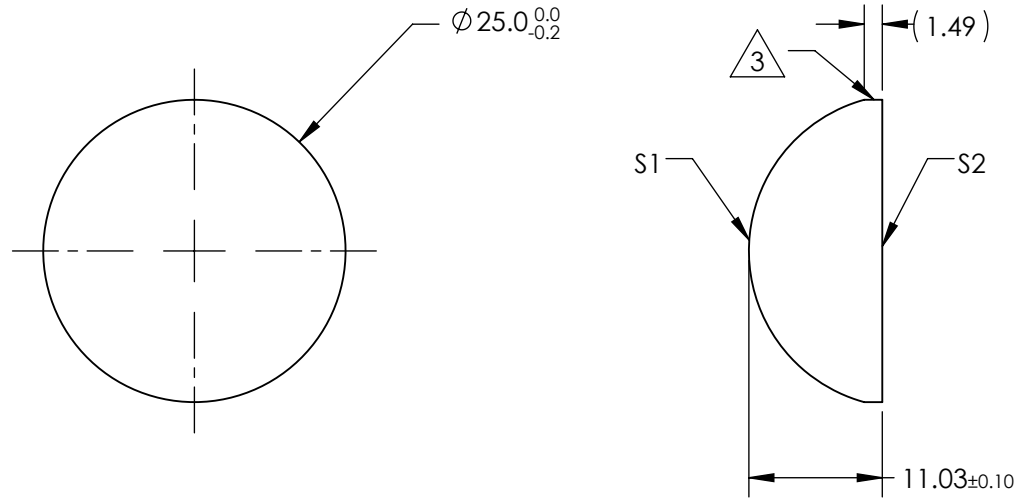
1. SUBSTRATE MATERIAL:  
N-BK7
2. COATING (APPLY ACROSS CLEAR APERTURE)

S1 & S2:  
LASER V-COAT

R(abs) <0.25% @ 532nm  
R(avg) <1.5% @ 495 - 570nm


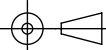
 3. FINE GROUND SURFACE

4. POWER, IRREGULARITY, AND SURFACE QUALITY SPECIFICATIONS APPLY ACROSS CLEAR APERTURE
5. RoHS COMPLIANT



**FOR INFORMATION ONLY:  
DO NOT MANUFACTURE  
PARTS TO THIS DRAWING**

SPECIFICATIONS SUBJECT TO CHANGE WITHOUT NOTICE  
DIMENSIONS ARE FOR REFERENCE ONLY

REV. A	S1	S2					
SHAPE	CONVEX	PLANO	EFL	25±3%	 <b>Edmund Optics®</b>		
RADIUS	12.96	∞	BFL	(17.74)			
SURFACE QUALITY	60-40	60-40	THIRD ANGLE PROJECTION 		TITLE	25.0mm DIA X 25.0mm FL 532nm V-COAT, CYLINDER LENS	
CLEAR APERTURE	∅ 24.00	∅ 24.00			DWG NO	33227	SHEET 1 OF 1
COATING APERTURE	∅ 24.00	∅ 24.00	ALL DIMS IN	mm			
BEVEL	PROTECTED AS NEEDED	PROTECTED AS NEEDED					