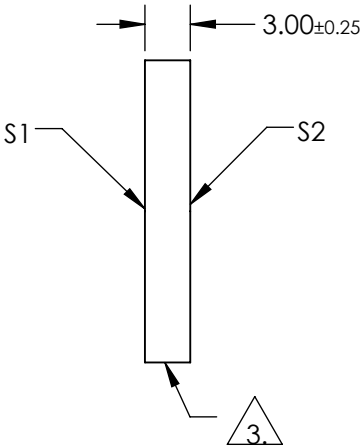
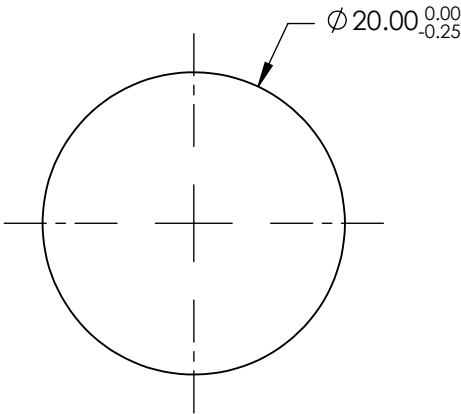
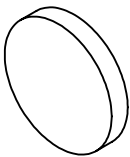


NOTES:

- 1. SUBSTRATE:
BOROFLOAT®
- 2. COATING SPECIFICATION:
S1: Enhanced Aluminum (250-700nm)
R(AVG) >89% @ 250 - 450nm
R(AVG) >85% @ 250 - 700nm


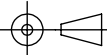
3. FINE GROUND SURFACE

- 4. ROHS COMPLIANT



**FOR INFORMATION ONLY:
DO NOT MANUFACTURE
PARTS TO THIS DRAWING**

SPECIFICATIONS SUBJECT TO CHANGE WITHOUT NOTICE
DIMENSIONS ARE FOR REFERENCE ONLY

		S1	S2	 Edmund Optics®		
SHAPE		PLANO	PLANO			
SURFACE QUALITY		60-40	COMMERCIAL POLISH		TITLE	20mm Dia. UV Enhanced Aluminum, λ/4 Mirror
CLEAR APERTURE		Ø17.00	N/A		DWG NO	63169
BEVEL		PROTECTIVE AS NEEDED	PROTECTIVE AS NEEDED	ALL DIMS IN	mm	SHEET 1 OF 1