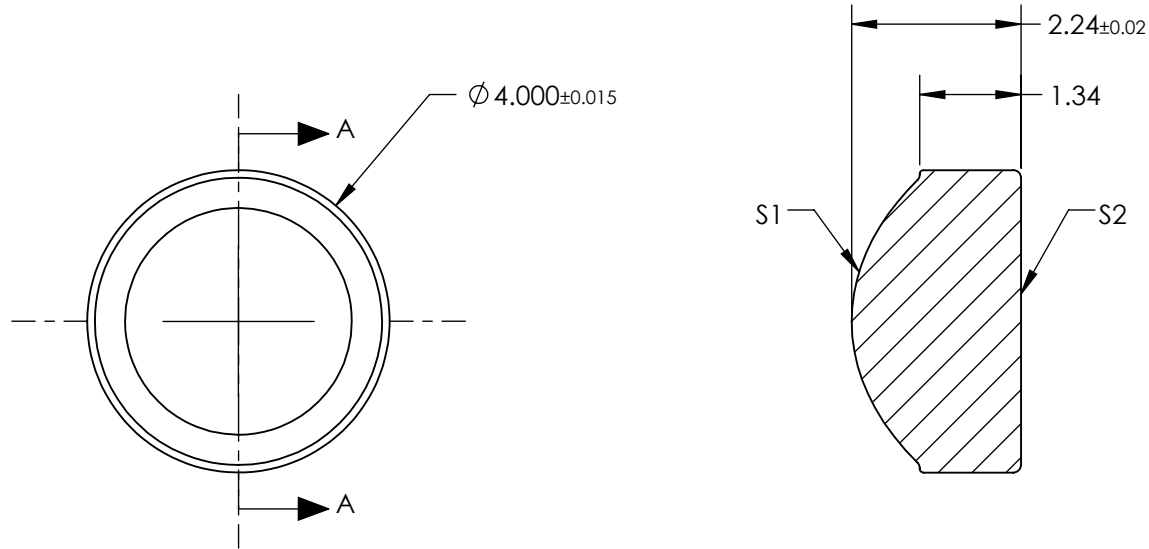


**NOTES:**


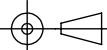
1. SUBSTRATE:  
D-ZLAF52LA
2. NUMERICAL APERTURE: 0.64
3. COATING  
S1 & S2: R(ABS) < 1.0% @ 1050 - 1600nm
4. FOCAL LENGTH TOLERANCE: ±1%
5. TRANSMITTED WAVEFRONT ERROR ( $\lambda$ , RMS): < 0.16



SECTION A-A

**FOR INFORMATION ONLY:  
DO NOT MANUFACTURE  
PARTS TO THIS DRAWING**

SPECIFICATIONS SUBJECT TO CHANGE WITHOUT NOTICE DIMENSIONS ARE FOR REFERENCE ONLY

	S1	S2	EFL	2.75	 <b>Edmund Optics®</b>
			BFL	1.50	
SHAPE	CONVEX	PLANO	THIRD ANGLE PROJECTION 	TITLE	0.64 NA 2.75mm FL 1050-1600nm AR COATED, MOLDED ASPHERIC LENS
SURFACE QUALITY	40-20	40-20		DWG NO	83628
CLEAR APERTURE	Ø3.60	Ø3.60		ALL DIMS IN	mm
BEVEL MAX	PROTECTIVE AS NEEDED	PROTECTIVE AS NEEDED			SHEET 1 OF 1