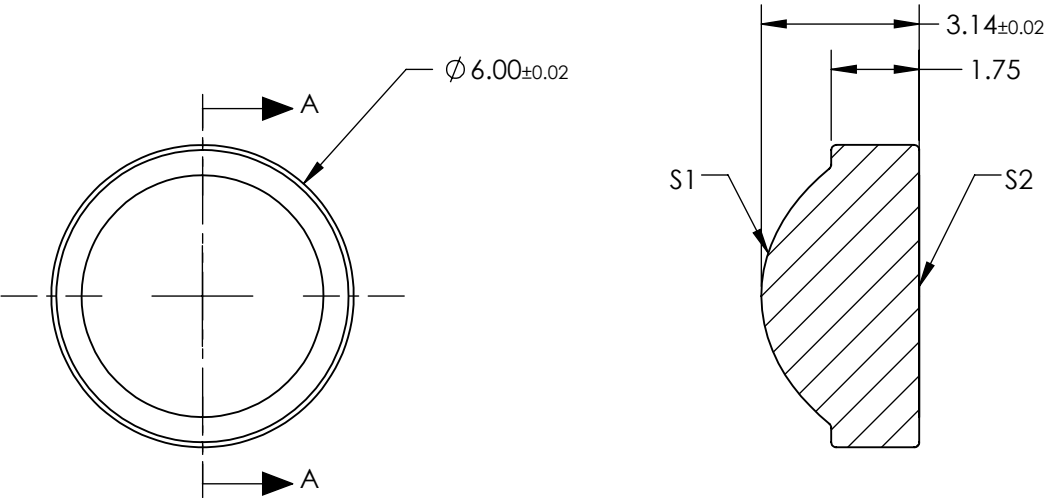


NOTES:


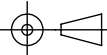
- 1. SUBSTRATE:
D-ZK3
- 2. NUMERICAL APERTURE: 0.55
- 3. COATING
S1 & S2: R(ABS) < 1.0% @ 600 - 1050nm
- 4. FOCAL LENGTH TOLERANCE: ±1%
- 5. TRANSMITTED WAVEFRONT ERROR (λ, RMS): < 0.087



SECTION A-A

**FOR INFORMATION ONLY:
DO NOT MANUFACTURE
PARTS TO THIS DRAWING**

SPECIFICATIONS SUBJECT TO CHANGE WITHOUT NOTICE DIMENSIONS ARE FOR REFERENCE ONLY

			EFL	4.60	 Edmund Optics®		
			BFL	2.71			
SHAPE	S1 CONVEX	S2 PLANO			TITLE	0.55 NA 4.60mm FL 600-1050nm AR COATED, MOLDED ASPHERIC LENS	
SURFACE QUALITY	40-20	40-20					
CLEAR APERTURE	Ø4.80	Ø4.80					
BEVEL MAX	PROTECTIVE AS NEEDED	PROTECTIVE AS NEEDED	ALL DIMS IN	mm	DWG NO	87158	SHEET 1 OF 1