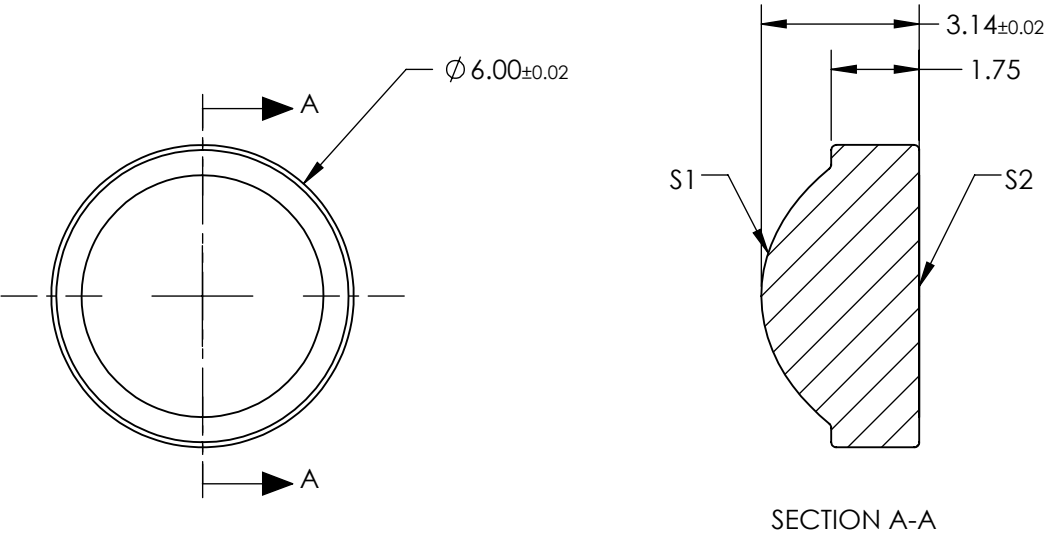


NOTES:


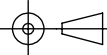
- 1. SUBSTRATE:
D-ZK3
- 2. NUMERICAL APERTURE: 0.55
- 3. COATING
S1 & S2: R(ABS) < 1.0% @ 1050 - 1600nm
- 4. FOCAL LENGTH TOLERANCE: ±1%
- 5. TRANSMITTED WAVEFRONT ERROR (λ , RMS): < 0.087



**FOR INFORMATION ONLY:
DO NOT MANUFACTURE
PARTS TO THIS DRAWING**

SPECIFICATIONS SUBJECT TO CHANGE WITHOUT NOTICE DIMENSIONS ARE FOR REFERENCE ONLY

	S1	S2
SHAPE	CONVEX	PLANO
SURFACE QUALITY	40-20	40-20
CLEAR APERTURE	Ø4.80	Ø4.80
BEVEL MAX	PROTECTIVE AS NEEDED	PROTECTIVE AS NEEDED

EFL	4.60	 Edmund Optics®		
BFL	2.71			
THIRD ANGLE PROJECTION 	TITLE	0.55 NA 4.60mm FL 1050-1600nm AR COATED, MOLDED ASPHERIC LENS		
ALL DIMS IN mm	DWG NO	87159	SHEET 1 OF 1	