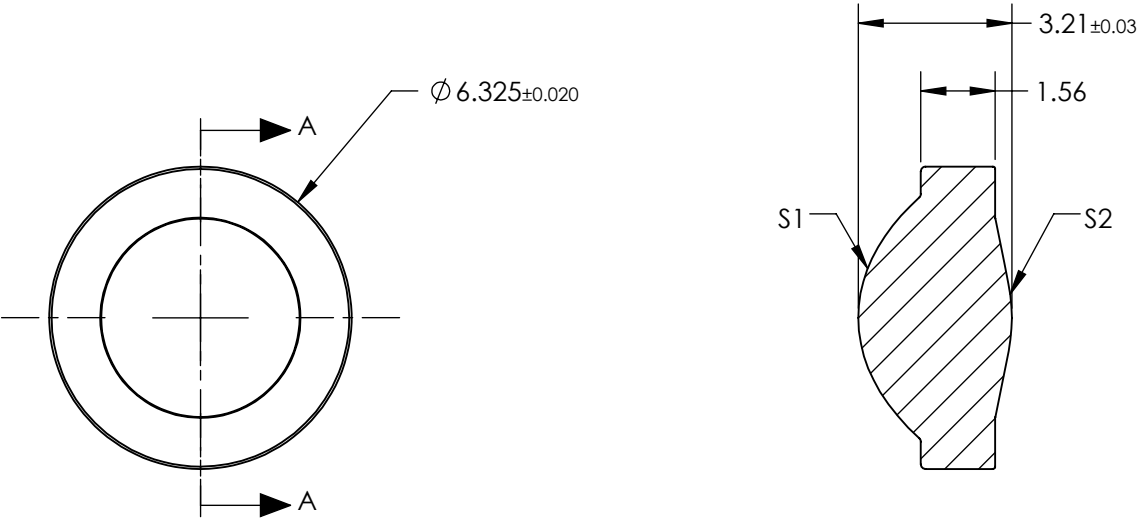


NOTES:


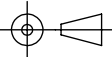
- 1. SUBSTRATE:
D-ZK3
- 2. NUMERICAL APERTURE: 0.68
- 3. COATING
S1 & S2: R(ABS) < 1.0% @ 600 - 1050nm
- 4. FOCAL LENGTH TOLERANCE: ±1%
- 5. TRANSMITTED WAVEFRONT ERROR (λ, RMS): < 0.200



SECTION A-A

**FOR INFORMATION ONLY:
DO NOT MANUFACTURE
PARTS TO THIS DRAWING**

SPECIFICATIONS SUBJECT TO CHANGE WITHOUT NOTICE DIMENSIONS ARE FOR REFERENCE ONLY

	S1	S2	EFL	3.10	 Edmund Optics®		
			BFL	1.80			
SHAPE	CONVEX	CONVEX			TITLE	0.68 NA 3.10mm FL 600-1050nm AR COATED, MOLDED ASPHERIC LENS	
SURFACE QUALITY	40-20	40-20					
CLEAR APERTURE	Ø5.00	Ø5.00	ALL DIMS IN	mm	DWG NO	87166	SHEET 1 OF 1
BEVEL MAX	PROTECTIVE AS NEEDED	PROTECTIVE AS NEEDED					