

NOTES:

1. SUBSTRATE MATERIAL:
N-BK7

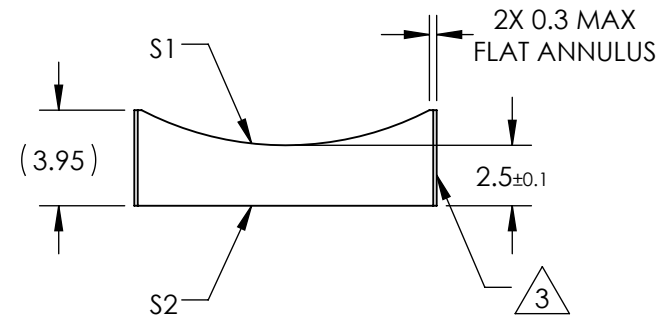
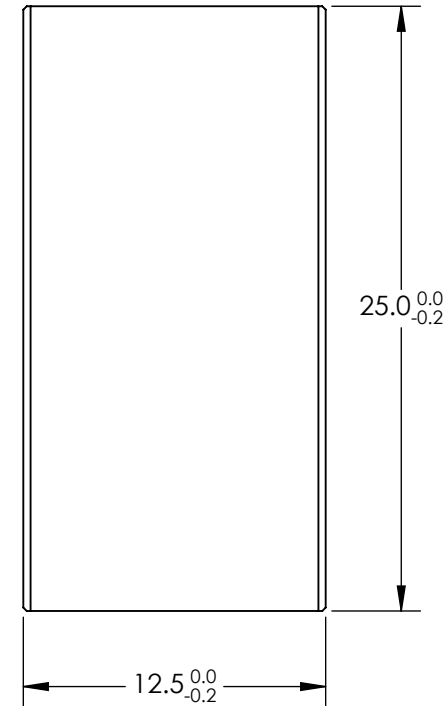
2. COATING (APPLY ACROSS CLEAR APERTURE)

S1 & S2: NONE

3. FINE GROUND SURFACE


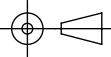
4. POWER, IRREGULARITY, AND SURFACE QUALITY
SPECIFICATIONS APPLY ACROSS CLEAR APERTURE

5. RoHS COMPLIANT



**FOR INFORMATION ONLY:
DO NOT MANUFACTURE
PARTS TO THIS DRAWING**

SPECIFICATIONS SUBJECT TO CHANGE WITHOUT NOTICE
DIMENSIONS ARE FOR REFERENCE ONLY

REV. A	S1	S2	EFL	-25	 Edmund Optics®		
SHAPE	CONVEX	PLANO	BFL	-26.65			
RADIUS	-12.92	∞	THIRD ANGLE PROJECTION  TITLE 12.5mm H X 25mm L X -25mm FL UNCOATED, CYLINDER LENS				
SURFACE QUALITY	60-40	60-40					
CLEAR APERTURE	11.50 X 24.00	11.50 X 24.00	ALL DIMS IN	mm	DWG NO	68055	SHEET 1 OF 1
COATING APERTURE	11.50 X 24.00	11.50 X 24.00					
BEVEL	PROTECTED AS NEEDED	PROTECTED AS NEEDED					