

NOTES:

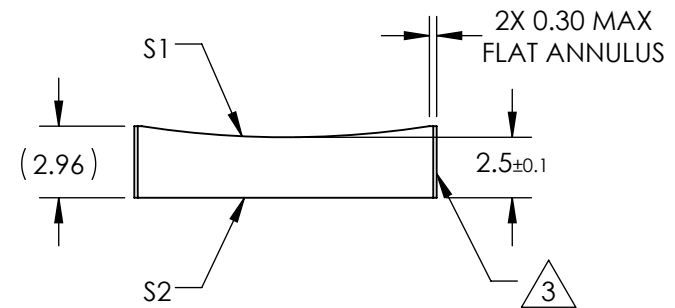
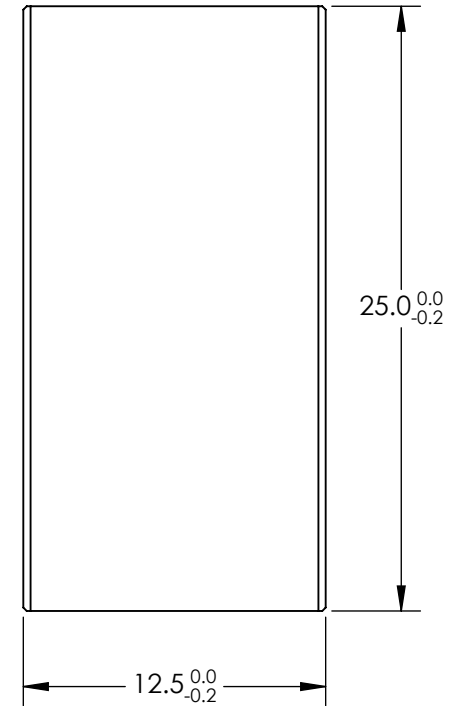
1. SUBSTRATE MATERIAL:
N-BK7
2. COATING (APPLY ACROSS CLEAR APERTURE)

S1 & S2: NONE

3. FINE GROUND SURFACE


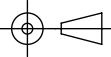
4. POWER, IRREGULARITY, AND SURFACE QUALITY SPECIFICATIONS APPLY ACROSS CLEAR APERTURE

5. RoHS COMPLIANT



**FOR INFORMATION ONLY:
DO NOT MANUFACTURE
PARTS TO THIS DRAWING**

SPECIFICATIONS SUBJECT TO CHANGE WITHOUT NOTICE
DIMENSIONS ARE FOR REFERENCE ONLY

REV. A	S1	S2	EFL	-75	 Edmund Optics®		
SHAPE	CONVEX	PLANO	BFL	-76.7			
RADIUS	-38.8	∞	THIRD ANGLE PROJECTION 				
SURFACE QUALITY	60-40	60-40					
CLEAR APERTURE	11.50 X 24.00	11.50 X 24.00	TITLE 12.5mm H X 25mm L X -75mm FL UNCOATED, CYLINDER LENS				
COATING APERTURE	11.50 X 24.00	11.50 X 24.00					
BEVEL	PROTECTED AS NEEDED	PROTECTED AS NEEDED	ALL DIMS IN	mm	DWG NO	68057	SHEET 1 OF 1