

NOTES:

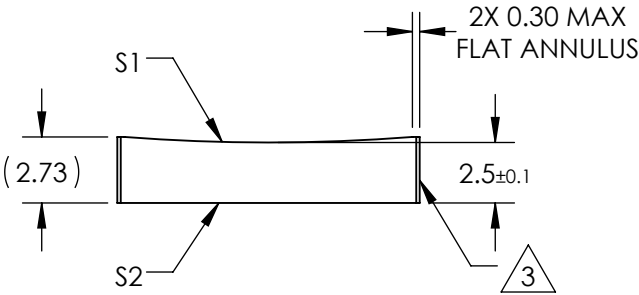
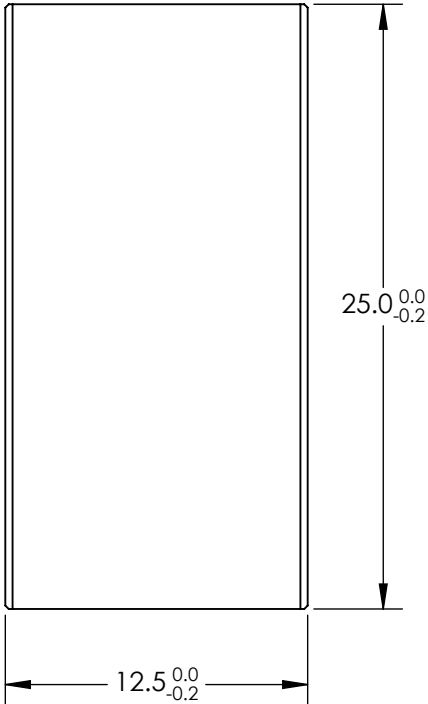
1. SUBSTRATE MATERIAL:
N-BK7
2. COATING (APPLY ACROSS CLEAR APERTURE)

S1 & S2: NONE

3. FINE GROUND SURFACE

4. POWER, IRREGULARITY, AND SURFACE QUALITY
SPECIFICAIONS APPLY ACROSS CLEAR APERTURE
5. RoHS COMPLIANT

**FOR INFORMATION ONLY:
DO NOT MANUFACTURE
PARTS TO THIS DRAWING**



SPECIFICATIONS SUBJECT TO CHANGE WITHOUT NOTICE
DIMENSIONS ARE FOR REFERENCE ONLY

REV. A	S1	S2	<div><div><div></div><div></div></div><div>Edmund Optics®</div></div>					
SHAPE	CONVEX	PLANO					EFL	-150
RADIUS	-77.52	∞					BFL	-151.65
SURFACE QUALITY	60-40	60-40	<div>THIRD ANGLE PROJECTION</div> <div><div></div><div></div></div>		TITLE	12.5mm H X 25mm L X -150mm FL UNCOATED, CYLINDER LENS		
CLEAR APERTURE	11.50 X 24.00	11.50 X 24.00						
COATING APERTURE	11.50 X 24.00	11.50 X 24.00						
BEVEL	PROTECTED AS NEEDED	PROTECTED AS NEEDED	ALL DIMS IN	mm	DWG NO	68060	SHEET 1 OF 1	