

NOTES:

1. SUBSTRATE MATERIAL:  
N-BK7

2. COATING (APPLY ACROSS CLEAR APERTURE)

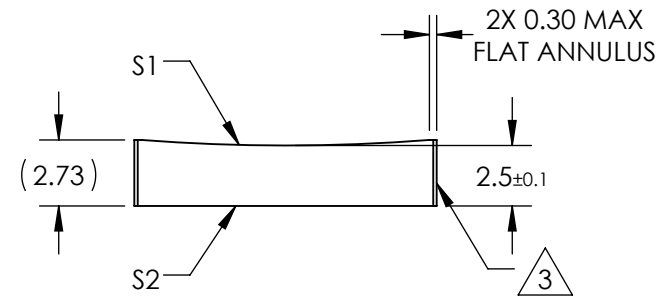
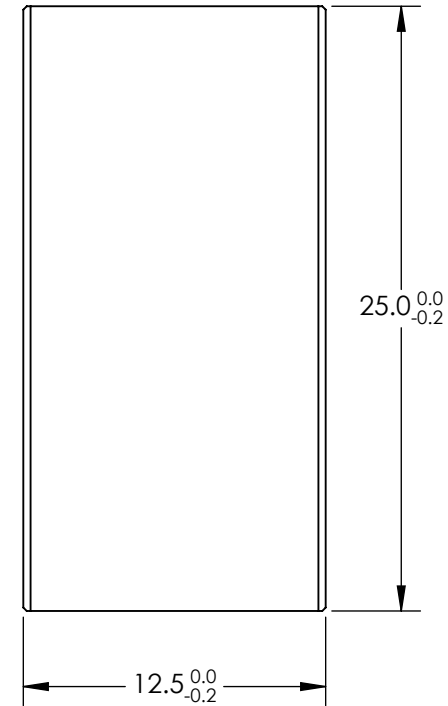
S1 & S2: MgF2

R(avg) ≤1.75% @ 400 - 700nm

3. FINE GROUND SURFACE


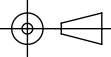
4. POWER, IRREGULARITY, AND SURFACE QUALITY SPECIFICATIONS APPLY ACROSS CLEAR APERTURE

5. RoHS COMPLIANT



**FOR INFORMATION ONLY:  
DO NOT MANUFACTURE  
PARTS TO THIS DRAWING**

SPECIFICATIONS SUBJECT TO CHANGE WITHOUT NOTICE  
DIMENSIONS ARE FOR REFERENCE ONLY

REV. A	S1	S2	EFL	-150	 <b>Edmund Optics®</b>		
SHAPE	CONVEX	PLANO	BFL	-151.65			
RADIUS	-77.52	∞	THIRD ANGLE PROJECTION 		TITLE	12.5mm H X 25mm L X -150mm FL MgF2 COATED, CYLINDER LENS	
SURFACE QUALITY	60-40	60-40	ALL DIMS IN	mm	DWG NO	68077	SHEET 1 OF 1
CLEAR APERTURE	11.50 X 24.00	11.50 X 24.00					
COATING APERTURE	11.50 X 24.00	11.50 X 24.00					
BEVEL	PROTECTED AS NEEDED	PROTECTED AS NEEDED					