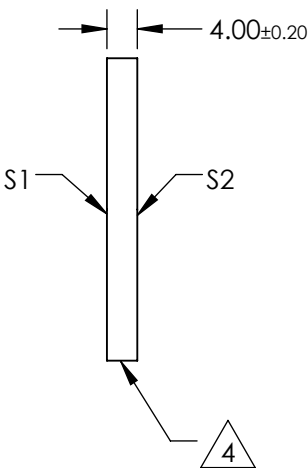
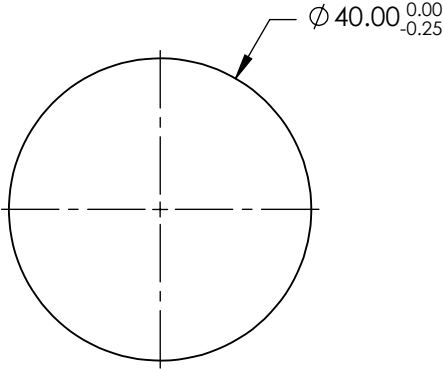
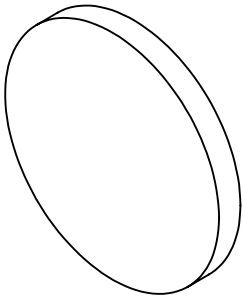



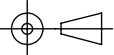
NOTES:

- 1. SUBSTRATE:  
N-BK7
- 2. S2 TO BE PARALLEL WITH S1 TO <1 ARCMIN
- 3. COATING (APPLY ACROSS CLEAR APERTURE)  
S1 & S2: NONE
- 4. FINE GRIND SURFACE
- 5. RoHS COMPLIANT
- 6. SURFACE FLATNESS (P-V):  
 $\lambda/4$  (per inch over clear aperture)



**FOR INFORMATION ONLY:  
DO NOT MANUFACTURE  
PARTS TO THIS DRAWING**

SPECIFICATIONS SUBJECT TO CHANGE WITHOUT NOTICE  
DIMENSIONS ARE FOR REFERENCE ONLY

|                 |                      |                      |  |        |   |              |
|-----------------|----------------------|----------------------|--|--------|---|--------------|
|                 | S1                   | S2                   |  Edmund Optics® |        |   |              |
| SHAPE           | PLANO                | PLANO                |                 | TITLE  | 40mm DIA., 4mm THICK, UNCOATED $\lambda/4$ N-BK7 WINDOW |              |
| SURFACE QUALITY | 60-40                | 60-40                |  | DWG NO | 45581   | SHEET 1 OF 1 |
| CLEAR APERTURE  | Ø36.00               | Ø36.00               |  |        |   |              |
| BEVEL           | PROTECTIVE AS NEEDED | PROTECTIVE AS NEEDED |  |        |   |              |
|                 |                      |                      | ALL DIMS IN  | mm     |   |              |