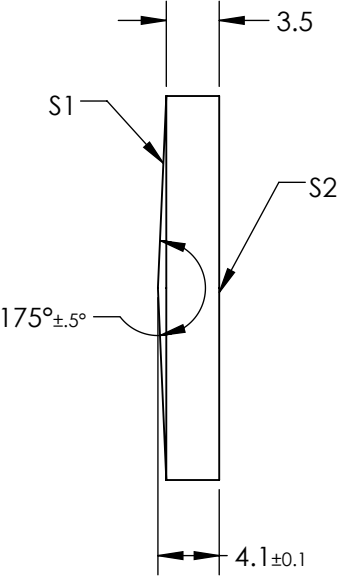
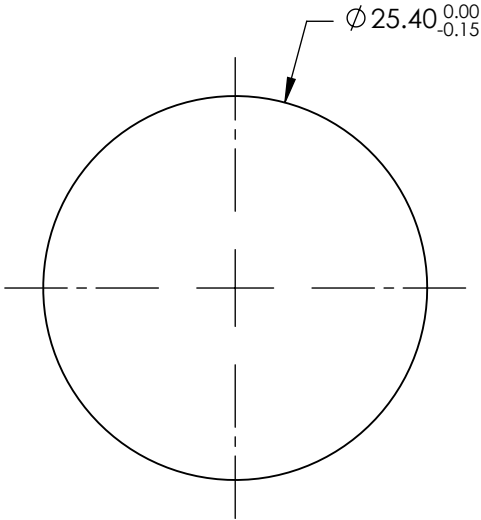


NOTES:

- 1. SUBSTRATE MATERIAL:
FUSED SILICA
- 2. COATING (APPLY ACROSS CLEAR APERTURE)

S1& S2: UV-AR
R(abs) ≤1.0% @ 250 - 425nm
R(avg) ≤0.75% @ 250 - 425nm
R(avg) ≤0.5% @ 370 - 420nm

3. RoHS COMPLIANT



FOR INFORMATION ONLY:
DO NOT MANUFACTURE
PARTS TO THIS DRAWING

SPECIFICATIONS SUBJECT TO CHANGE WITHOUT NOTICE
DIMENSIONS ARE FOR REFERENCE ONLY

REV. A	S1	S2	<div><div><div><div></div><div></div></div><div>Edmund Optics®</div></div></div>			
SHAPE	CONICAL	PLANO	<div>THIRD ANGLE PROJECTION</div> <div></div>	TITLE		
SURFACE ACCURACY	λ/4	λ/4		175° APEX ANGLE, 25.4mm DIA, UV-AR COATED AXICON		
SURFACE QUALITY	40-20	40-20		DWG NO		
CLEAR APERTURE	>90%	>90%		83802		
BEVEL	PROTECTIVE AS NEEDED	PROTECTIVE AS NEEDED		ALL DIMS IN	mm	SHEET 1 OF 1