

NOTES:

- 1. SUBSTRATE MATERIAL:
FUSED SILICA
- 2. COATING (APPLY ACROSS CLEAR APERTURE)

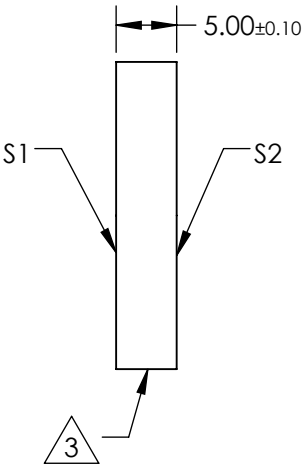
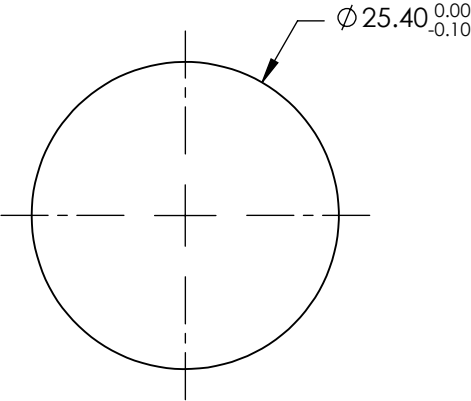
S1: Ultrafast Laser
R(AVG) >99% @ 720 - 880nm

S2: NONE

 FINE GROUND SURFACE

- 4. RoHS COMPLIANT

**FOR INFORMATION ONLY:
DO NOT MANUFACTURE
PARTS TO THIS DRAWING**



SPECIFICATIONS SUBJECT TO CHANGE WITHOUT NOTICE
DIMENSIONS ARE FOR REFERENCE ONLY

REV. A	S1	S2
SHAPE	PLANO	PLANO
CLEAR APERTURE (%)	Ø22.86	N/A
SURFACE QUALITY	20-10	COMMERCIAL POLISH
SURFACE FLATNESS	λ/8	N/A
BEVEL	PROTECTIVE AS NEEDED	PROTECTIVE AS NEEDED

 **Edmund Optics®**



ALL DIMS IN

mm

TITLE

720 - 880nm, 25.4mm Dia. x 5.00mm
Thickness, Ultrafast Broadband Laser Mirror

DWG NO

84619

SHEET
1 OF 1