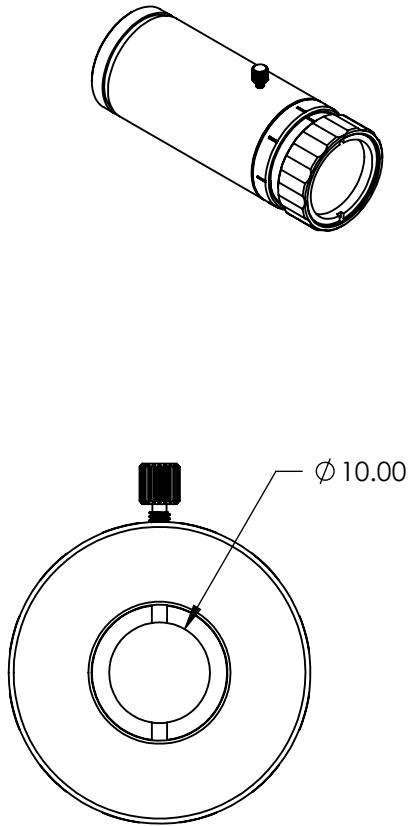
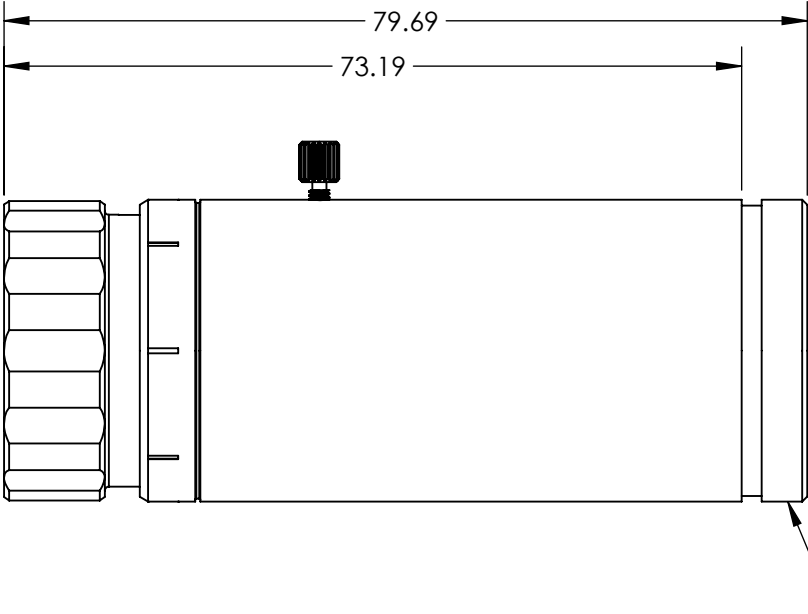
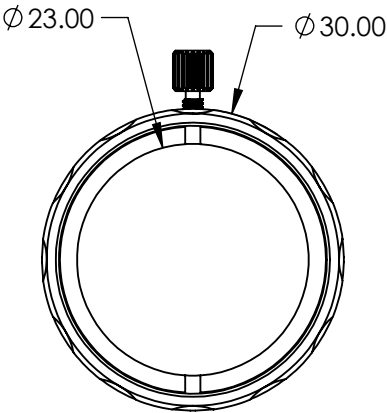


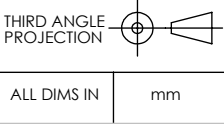
- NOTES:
- 1. COATING (APPLY ACROSS CLEAR APERTURE)
LASER V-COAT
 $R(ABS) \leq 0.25\% @ 266nm$
 - 2. RoHS: COMPLIANT



**FOR INFORMATION ONLY:
DO NOT MANUFACTURE
PARTS TO THIS DRAWING**

SPECIFICATIONS SUBJECT TO CHANGE WITHOUT NOTICE
DIMENSIONS ARE FOR REFERENCE ONLY

DAMAGE THRESHOLD (PULSED)	1.5J/cm ² @ 10ns, 20Hz, 266nm
DESIGN WAVELENGTH DWL (nm)	266
EXPANSION POWER	3X
TRANSMISSION (%)	> 99 (NOMINAL)
NOMINAL PERFORMANCE	< $\lambda/10$ FOR 4mm INPUT BEAM (NOMINAL)



 Edmund Optics®			
TITLE	3X, 266nm VEGAT™ Nd:YAG LASER LINE BEAM EXPANDER		
DWG NO	35096	SHEET 1 OF 1	