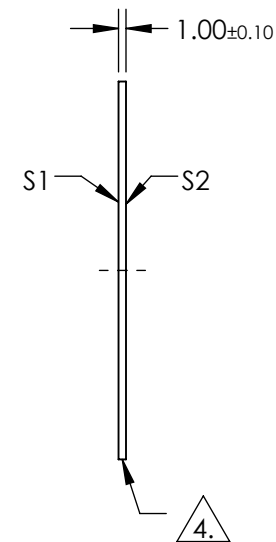
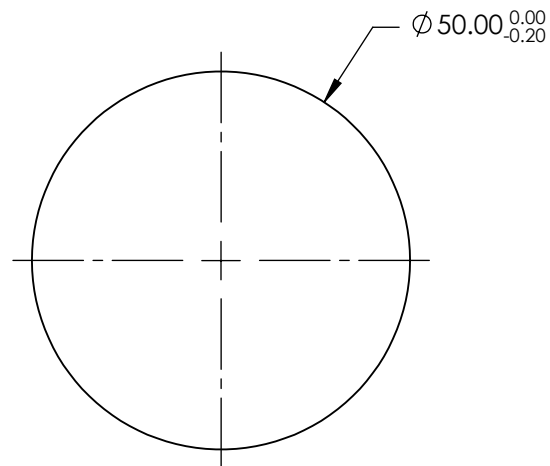


NOTES:

1. SUBSTRATE: UV GRADE FUSED SILICA
2. COATING (APPLY ACROSS COATING APERTURE)
S1 & S2: RABS $\leq 1.0\%$ @ 250 - 425nm
RAVG $\leq 0.75\%$ @ 250 - 425nm
RAVG $\leq 0.5\%$ @ 370 - 420nm
3. SURFACE S2 TO BE PARALLEL TO SURFACE S1 WITHIN <5 ARCSEC
4. FINE GRIND SURFACE
5. RoHS COMPLIANT

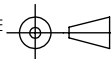


**FOR INFORMATION ONLY:
DO NOT MANUFACTURE
PARTS TO THIS DRAWING**

SPECIFICATIONS SUBJECT TO CHANGE WITHOUT NOTICE
DIMENSIONS ARE FOR REFERENCE ONLY

	S1	S2
SHAPE	PLANO	PLANO
SURFACE QUALITY	20-10	20-10
CLEAR APERTURE	$\varnothing 40.00$	$\varnothing 40.00$
BEVEL	PROTECTIVE AS NEEDED	PROTECTIVE AS NEEDED

THIRD ANGLE
PROJECTION



ALL DIMS IN

mm

EO[®] Edmund Optics[®]

TITLE

50mm DIA., 1mm THICK, UV-AR COATED $\lambda/10$
FUSED SILICA WINDOW

DWG NO

36938

SHEET
1 OF 1