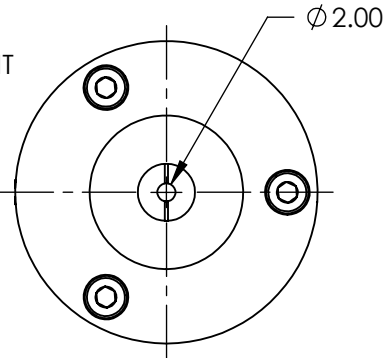
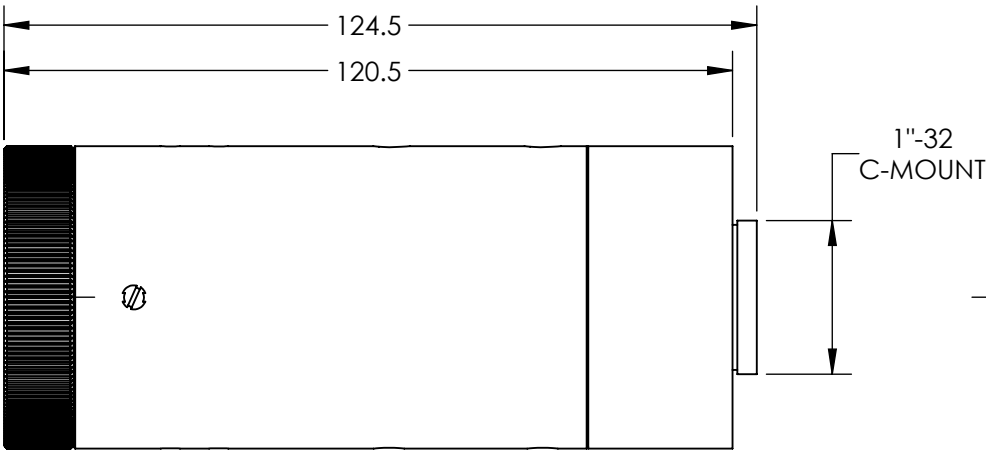
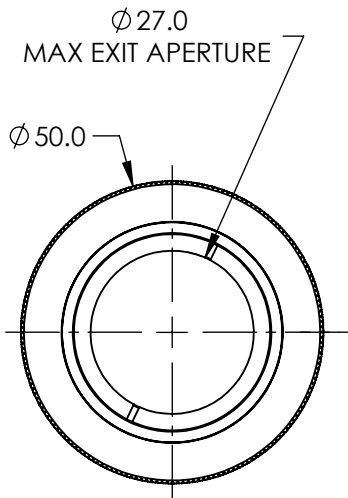
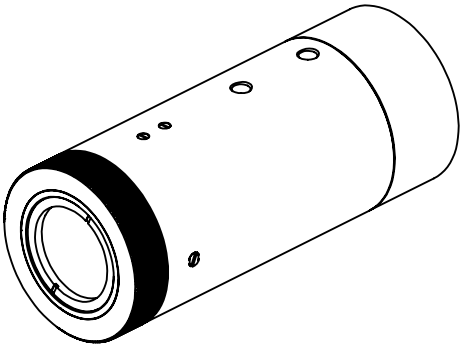


NOTES:

- 1. COATING: BBAR (450-750nm)
R(ABS) <0.4% @ 630 - 670nm
R(AVG) <0.6% @ 450 - 750nm
- 2. RoHS COMPLIANT



**FOR INFORMATION ONLY:
DO NOT MANUFACTURE
PARTS TO THIS DRAWING**

SPECIFICATIONS SUBJECT TO CHANGE WITHOUT NOTICE
DIMENSIONS ARE FOR REFERENCE ONLY

Edmund Optics®

DESIGN WAVELENGTH DWL (nm)	633
EXPANSION POWER	15X
MOUNT	C-MOUNT
TRANSMITTED WAVEFRONT, P-V	$\lambda/4$



ALL DIMS IN mm

TITLE	15X Arcturus™ HeNe Beam Expander
DWG NO	58209
SHEET	1 OF 1