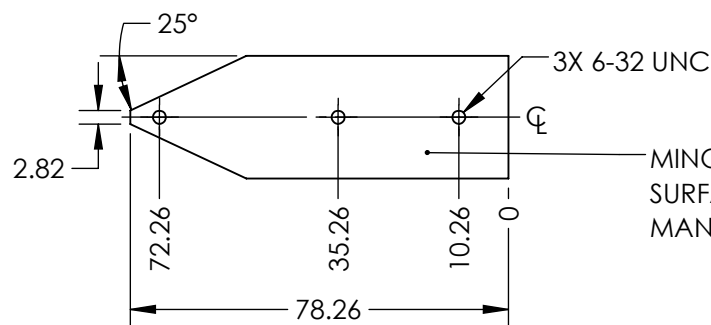
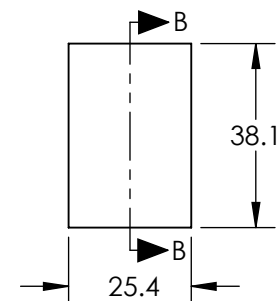
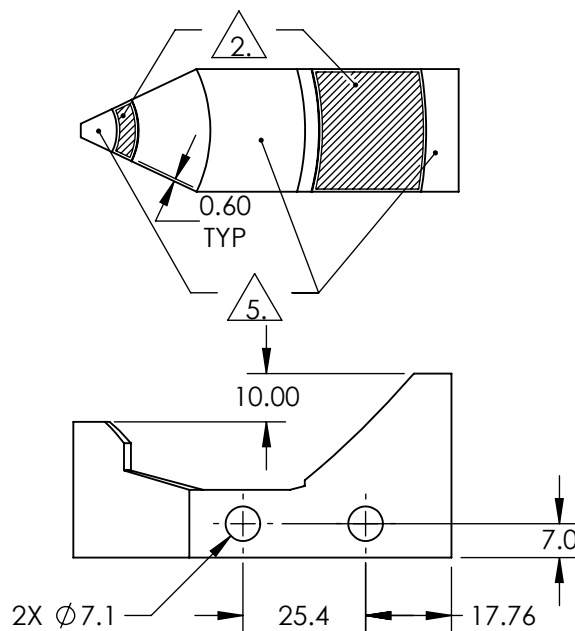
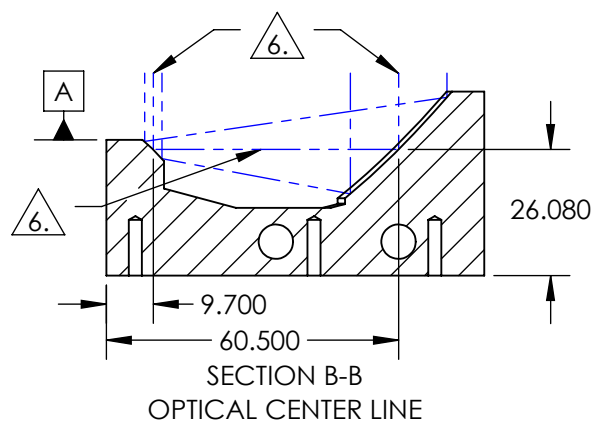


NOTES:

1. SUBSTRATE: ALUMINUM 6061-T6
2. COATING
BARE GOLD
- R(AVG) > 94% @ 700 - 800nm
R(AVG) > 97% @ 800 - 2000nm
R(AVG) > 98% @ 2 - 12μm
3. SURFACE ROUGHNESS: <50 Å RMS
4. SYSTEM SHALL BE ALIGNED TO DATUM **A**
WITH REFLECTED WAVEFRONT ERROR OF $\leq 1/8$
WAVE AT 632.8 nm FOR Ø1mm INPUT BEAM.
5. INTEGRATED ALIGNMENT FLATS
6. OPTICAL CENTER LINE
7. RoHS COMPLIANT



MINOR SCRATCHES ON THE NON-OPTICAL
SURFACE MIGHT BE PRESENT DUE TO THE
MANUFACTURING PROCESS.

**FOR INFORMATION ONLY:
DO NOT MANUFACTURE
PARTS TO THIS DRAWING**

SPECIFICATIONS SUBJECT TO
CHANGE WITHOUT NOTICE
DIMENSIONS ARE FOR
REFERENCE ONLY

Edmund Optics®

| | |
|--------|----------------------|
| REV. A | S1 |
| SHAPE | MONOLITHIC |
| BEVEL | PROTECTIVE AS NEEDED |

| | |
|---------------------------|----|
| THIRD ANGLE PROJECTION | |
| ALL DIMS IN | mm |

| | |
|--------|--|
| TITLE | 5X, Bare Gold Canopus™ Reflective Beam Expander |
| DWG NO | 37192 |
| SHEET | 1 OF 1 |