

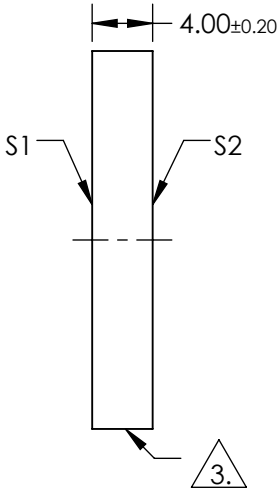
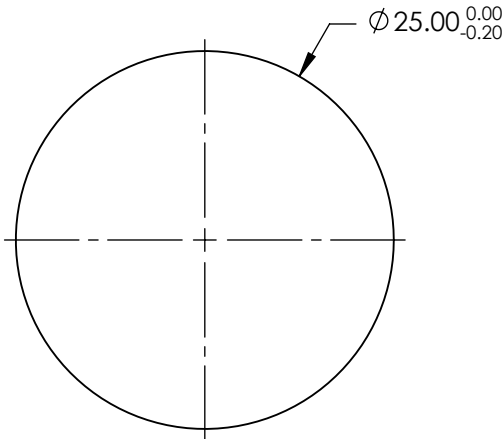
- NOTES:
- 1. SUBSTRATE:
FUSED SILICA
 - 2. COATING (APPLY ACROSS COATING APERTURE):

S1: R(AVG) ≥ 98% @ 340-488nm @ 0° AOI
R(AVG) ≥ 98% @ 320-450nm @ 45° AOI FOR ALL POLARIZATION
R(AVG) ≥ 98% @ 320-450nm @ 45° FOR S-POLARIZATION

S2: NONE

3. FINE GRIND SURFACE

FOR INFORMATION ONLY:
DO NOT MANUFACTURE
PARTS TO THIS DRAWING




SPECIFICATIONS SUBJECT TO CHANGE WITHOUT NOTICE
DIMENSIONS ARE FOR REFERENCE ONLY

	S1	S2
SHAPE	PLANO	PLANO
CLEAR APERTURE	> 90	N/A
SURFACE QUALITY	20-10	COMMERCIAL POLISH
SURFACE FLATNESS	λ/10 (BEFORE COATING)	N/A
BEVEL	PROTECTIVE AS NEEDED	PROTECTIVE AS NEEDED

THIRD ANGLE
PROJECTION

ALL DIMS IN mm

 **Edmund Optics®**

TITLE	Ø25mm, 320 - 450nm BROADBAND λ/10 MIRROR		
DWG NO	37564	SHEET 1 OF 1	