

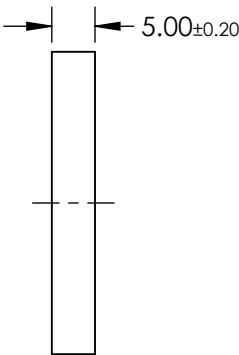
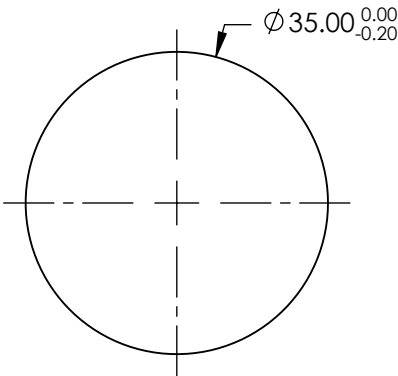
- NOTES:
- 1. SUBSTRATE:
FUSED SILICA
 - 2. COATING (APPLY ACROSS COATING APERTURE):

S1: $R(AVG) \geq 98\%$ @ 340-488nm @ 0° AOI
 $R(AVG) \geq 98\%$ @ 320-450nm @ 45° AOI FOR ALL POLARIZATION
 $R(AVG) \geq 98\%$ @ 320-450nm @ 45° FOR S-POLARIZATION

S2: NONE


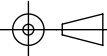
3. FINE GRIND SURFACE

FOR INFORMATION ONLY:
DO NOT MANUFACTURE
PARTS TO THIS DRAWING



SPECIFICATIONS SUBJECT TO CHANGE WITHOUT NOTICE
DIMENSIONS ARE FOR REFERENCE ONLY

	S1	S2
SHAPE	PLANO	PLANO
CLEAR APERTURE	> 90	N/A
SURFACE QUALITY	20-10	COMMERCIAL POLISH
SURFACE FLATNESS	$\lambda/10$ (BEFORE COATING)	N/A
BEVEL	PROTECTIVE AS NEEDED	PROTECTIVE AS NEEDED

 Edmund Optics®			
THIRD ANGLE PROJECTION 		TITLE	Ø35mm, 320 - 450nm BROADBAND $\lambda/10$ MIRROR
ALL DIMS IN	mm	DWG NO	37569
			SHEET 1 OF 1