

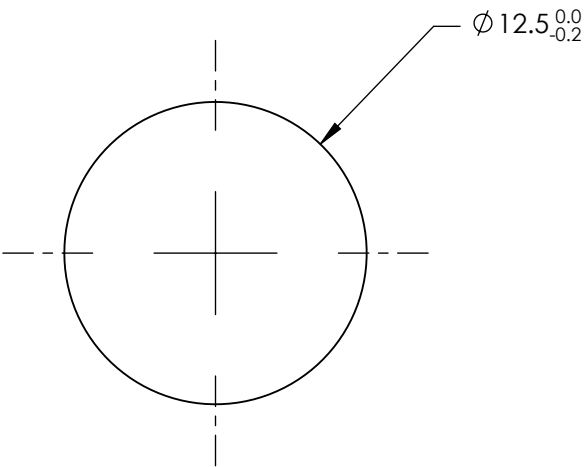
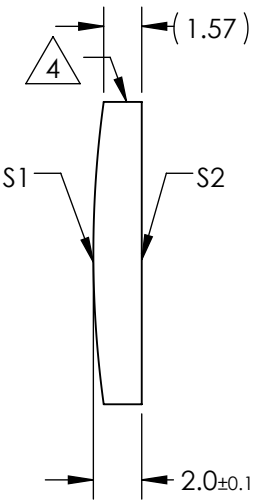
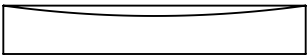
NOTES:

- 1. SUBSTRATE MATERIAL:  
FUSED SILICA
- 2. COATING (APPLY ACROSS CLEAR APERTURE)  
  
S1 & S2: NONE

- 3. WEDGE TOLERANCE: <15 arcmin


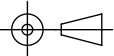
4. FINE GROUND SURFACE

- 5. POWER, IRREGULARITY, AND SURFACE QUALITY  
SPECIFICAIONS APPLY ACROSS CLEAR APERTURE
- 6. RoHS COMPLIANT



**FOR INFORMATION ONLY:  
DO NOT MANUFACTURE  
PARTS TO THIS DRAWING**

SPECIFICATIONS SUBJECT TO CHANGE WITHOUT NOTICE  
DIMENSIONS ARE FOR REFERENCE ONLY

| REV. A           | S1                  | S2                  | EFL   | 100   |  <b>Edmund Optics®</b> |  |                 |
|------------------|---------------------|---------------------|---|-------|---|--|-----------------|
| SHAPE            | CONVEX              | PLANO               | BFL   | 98.63 |   |  |                 |
| RADIUS           | 45.85               | ∞                   |  |       | TITLE   | 12.5mm DIAMETER X 100mm FL UNCOATED,<br>UV PCX CYLINDER LENS |                 |
| SURFACE QUALITY  | 40-20               | 40-20               |   |       |   |  |                 |
| CLEAR APERTURE   | Ø11.50              | Ø11.50              | ALL DIMS IN   |       | DWG NO  | 68171  |                 |
| COATING APERTURE | Ø11.50              | Ø11.50              |   |       |   |  |                 |
| BEVEL            | PROTECTED AS NEEDED | PROTECTED AS NEEDED | mm  |       |   |  | SHEET<br>1 OF 1 |