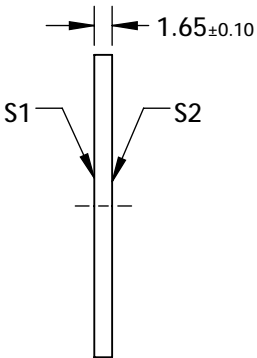
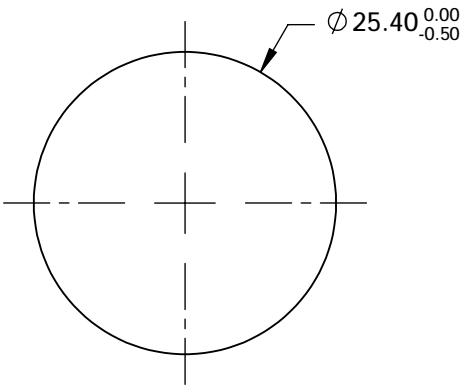
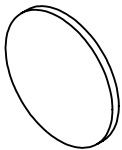


- NOTES:
1. SUBSTRATE MATERIAL:
FUSED SILICA
 2. SURFACE S1 TO BE PARALLEL TO SURFACE S2 TO WITHIN <3 ARCMIN
 3. COATING (APPLY ACROSS COATING APERTURE)

S1: Square Aluminum (AlMgF2) Apertures
R: 30±5% @ 250 - 2000nm @ 45° AOI
T: 70±5% @ 250 - 2000nm @ 45° AOI

S2: NONE
 4. POLKA DOT CENTER TO CENTER SPACING : 0.15mm
POLKA DOT MINIMUM APERTURE: 2mm
 5. ROHS : COMPLIANT

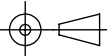


FOR INFORMATION ONLY:
DO NOT MANUFACTURE
PARTS TO THIS DRAWING

SPECIFICATIONS SUBJECT TO CHANGE WITHOUT NOTICE
DIMENSIONS ARE FOR REFERENCE ONLY

	S1	S2
SHAPE	PLANO	PLANO
SURFACE QUALITY	80-50	80-50
CLEAR APERTURE	90%	90%
BEVEL	PROTECTIVE AS NEEDED	PROTECTIVE AS NEEDED

THIRD ANGLE
PROJECTION



ALL DIMS IN

mm



Edmund Optics®

TITLE

BS POLKA-DOT 30/70 25.4mm DIA

DWG NO

47604

SHEET
1 OF 1