

NOTES:

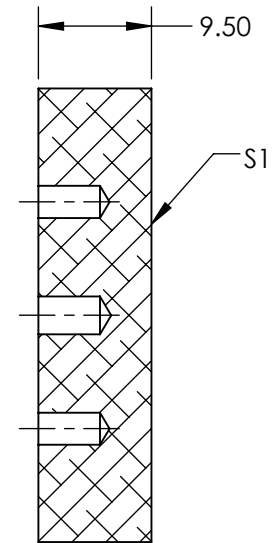
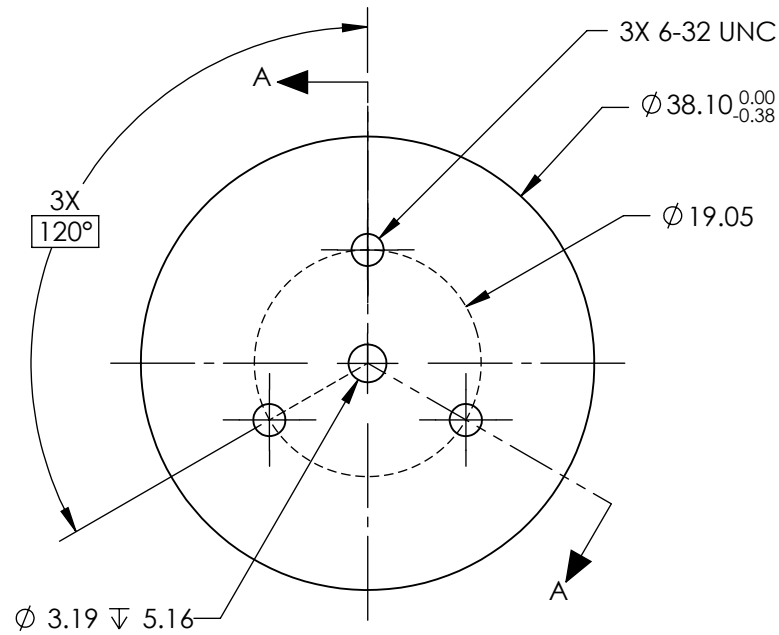
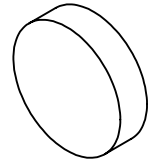
1. SUBSTRATE MATERIAL:
ALUMINUM
2. FINISH (EXCEPT SURFACE S1):
BLACK ANODIZED
3. COATING (APPLY ACROSS CLEAR APERTURE)

S1: PROTECTED ALUMINUM
 R(AVG) >85% @ 400 - 700nm
 R(AVG) >70% @ 700 - 2000nm
 R(AVG) >97% @ 2 - 12μm

SURFACE ROUGHNESS: <175Å

4. ROHS COMPLIANT

**FOR INFORMATION ONLY:
DO NOT MANUFACTURE
PARTS TO THIS DRAWING**



SECTION A-A

SPECIFICATIONS SUBJECT TO CHANGE WITHOUT NOTICE
 DIMENSIONS ARE FOR REFERENCE ONLY

EO® **Edmund Optics**®

	S1					
SHAPE	CONVEX	THIRD ANGLE PROJECTION		TITLE	Ø38.1mm, ALUM. COATED, ALUM. SUBSTRATE MIRROR	
SURFACE ACCURACY AT 632.8nm	λ/4 RMS	ALL DIMS IN	mm	DWG NO	47115	SHEET 1 OF 1
SURFACE QUALITY	80-50					