

NOTES:

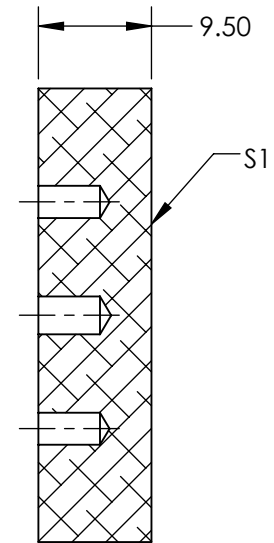
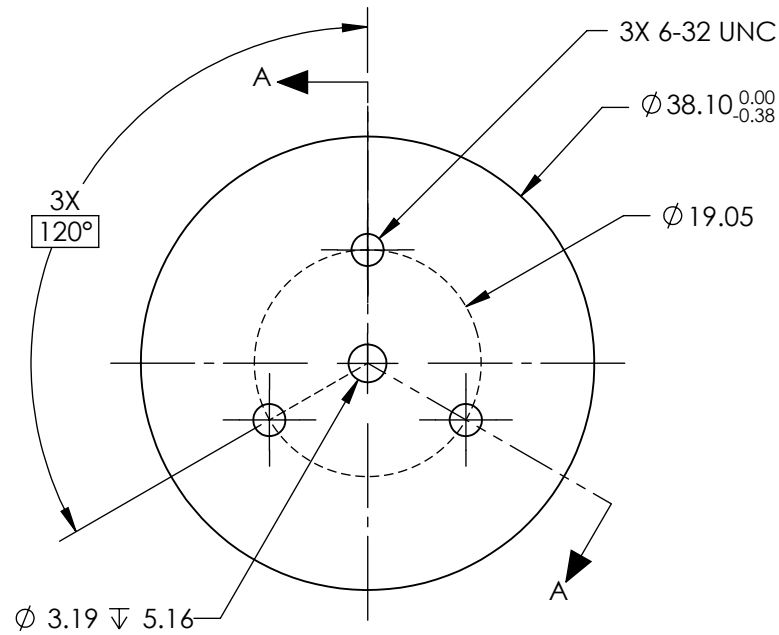
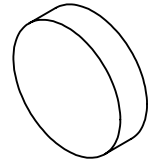
1. SUBSTRATE MATERIAL:  
ALUMINUM
2. FINISH (EXCEPT SURFACE S1):  
BLACK ANODIZED
3. COATING (APPLY ACROSS CLEAR APERTURE)

S1: PROTECTED ALUMINUM  
 R(AVG) >94% @ 700 - 800nm  
 R(AVG) >97% @ 800 - 2000nm  
 R(AVG) >98% @ 2 - 12μm

SURFACE ROUGHNESS: <175Å

4. ROHS COMPLIANT

**FOR INFORMATION ONLY:  
DO NOT MANUFACTURE  
PARTS TO THIS DRAWING**



SECTION A-A

SPECIFICATIONS SUBJECT TO CHANGE WITHOUT NOTICE  
 DIMENSIONS ARE FOR REFERENCE ONLY

**EO**® Edmund Optics®

	S1					
SHAPE	CONVEX	THIRD ANGLE PROJECTION		TITLE	Ø38.1mm, GOLD COATED, ALUM. SUBSTRATE MIRROR	
SURFACE ACCURACY AT 632.8nm	λ/4 RMS	ALL DIMS IN	mm	DWG NO	47116	SHEET 1 OF 1
SURFACE QUALITY	80-50					