

NOTES:

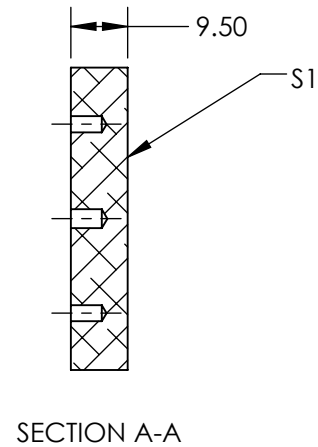
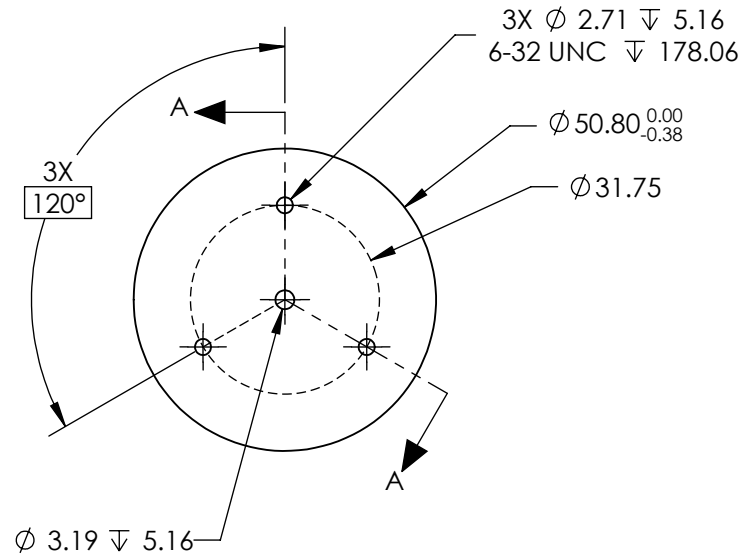
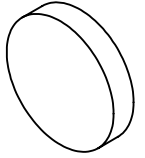
1. SUBSTRATE MATERIAL:
ALUMINUM
2. FINISH (EXCEPT SURFACE S1):
BLACK ANODIZED
3. COATING (APPLY ACROSS CLEAR APERTURE)

S1: PROTECTED ALUMINUM
 R(AVG) >85% @ 400 - 700nm
 R(AVG) >70% @ 700 - 2000nm
 R(AVG) >97% @ 2 - 12μm

SURFACE ROUGHNESS: <175Å

4. ROHS COMPLIANT

FOR INFORMATION ONLY:
DO NOT MANUFACTURE
PARTS TO THIS DRAWING



SPECIFICATIONS SUBJECT TO CHANGE WITHOUT NOTICE
 DIMENSIONS ARE FOR REFERENCE ONLY

EO® Edmund Optics®

	S1	THIRD ANGLE PROJECTION 	TITLE	Ø50.8mm, ALUM. COATED, ALUM. SUBSTRATE MIRROR	
SHAPE	CONVEX		DWG NO	47117	SHEET 1 OF 1
SURFACE ACCURACY AT 632.8nm	λ/4 RMS		ALL DIMS IN	mm	
SURFACE QUALITY	80-50				