

NOTES:

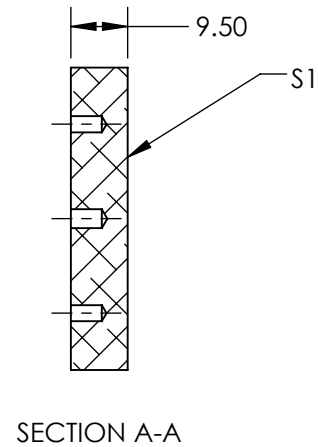
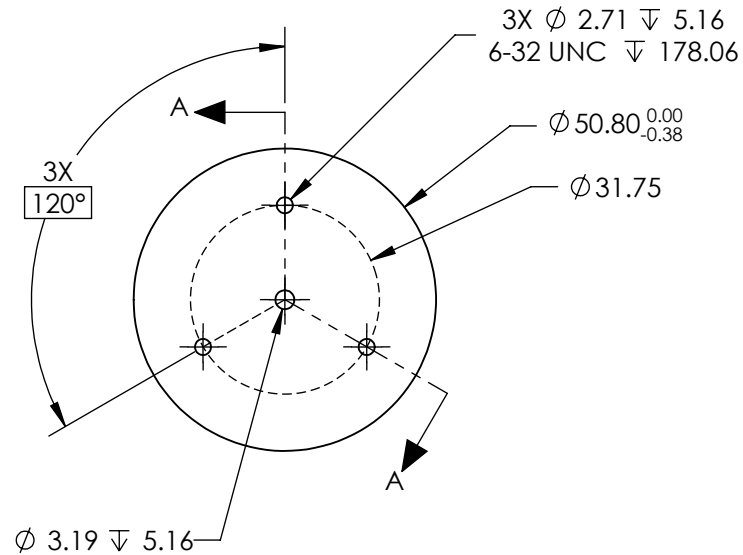
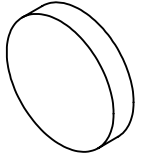
1. SUBSTRATE MATERIAL:
ALUMINUM
2. FINISH (EXCEPT SURFACE S1):
BLACK ANODIZED
3. COATING (APPLY ACROSS CLEAR APERTURE)

S1: PROTECTED ALUMINUM
 R(AVG) >94% @ 700 - 800nm
 R(AVG) >97% @ 800 - 2000nm
 R(AVG) >98% @ 2 - 12μm

SURFACE ROUGHNESS: <175Å

4. ROHS COMPLIANT

**FOR INFORMATION ONLY:
DO NOT MANUFACTURE
PARTS TO THIS DRAWING**



SPECIFICATIONS SUBJECT TO CHANGE WITHOUT NOTICE
 DIMENSIONS ARE FOR REFERENCE ONLY

EO® Edmund Optics®

	S1					
SHAPE	CONVEX	THIRD ANGLE PROJECTION		TITLE	Ø50.8mm, GOLD COATED, ALUM. SUBSTRATE MIRROR	
SURFACE ACCURACY AT 632.8nm	λ/4 RMS	ALL DIMS IN	mm	DWG NO	47118	SHEET 1 OF 1
SURFACE QUALITY	80-50					