

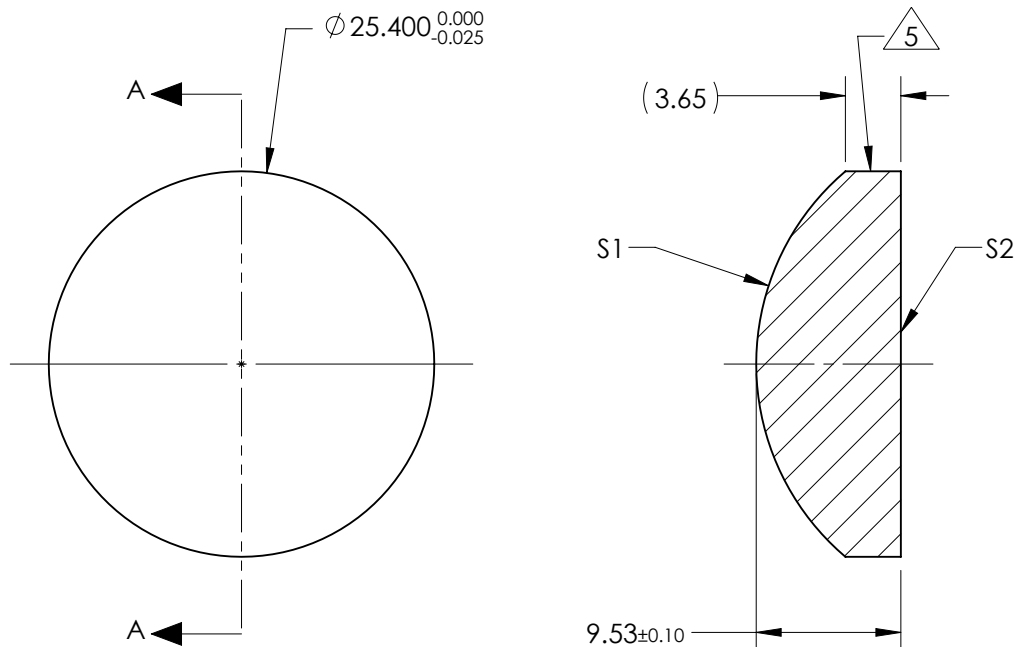
NOTES:

- SUBSTRATE:  
CORNING: FUSED SILICA 458/678
- ROHS COMPLIANT
- CENTERING TOLERANCE (AT 587.6nm):  
BEAM DEVIATION (HALF ANGLE): <1 ARCMIN
- COATING (APPLY ACROSS COATING APERTURE)

S1: NONE  
S2: NONE

5. FINE GRIND SURFACE

- POWER, IRREGULARITY, AND SURFACE QUALITY SPECIFICATIONS APPLY ACROSS CLEAR APERTURE
- FOCAL LENGTH (EFL): 35.00mm  $\pm$ 1%  
BACK FOCAL LENGTH (BFL): 28.55mm
- PROTECTIVE BEVEL AS NEEDED
- DESIGN WAVELENGTH: 355nm



SECTION A-A

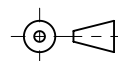
***FOR INFORMATION ONLY:***  
**DO NOT MANUFACTURE**  
**PARTS TO THIS DRAWING**

	S1	S2
SHAPE	CONVEX	PLANO
RADIUS	16.66	INFINITY
SURFACE QUALITY	10 - 5	10 - 5
MIN CLEAR APERTURE	$\phi$ 21.59	$\phi$ 21.59
MIN COATING APERTURE	N/A	N/A
POWER AT 632.8nm	2.0 RINGS	2.0 RINGS
IRREGULARITY AT 632.8nm	0.2 RINGS	0.2 RINGS

SPECIFICATIONS SUBJECT TO CHANGE WITHOUT NOTICE  
DIMENSIONS ARE FOR REFERENCE ONLY

**EO** <sup>®</sup> **Edmund Optics** <sup>®</sup>

THIRD ANGLE  
PROJECTION



ALL DIMS IN

mm

TITLE

25.4mm Dia x 35mm EFL, Uncoated,  
Laser Grade PCX Lens

DWG NO

38624

SHEET  
1 OF 1