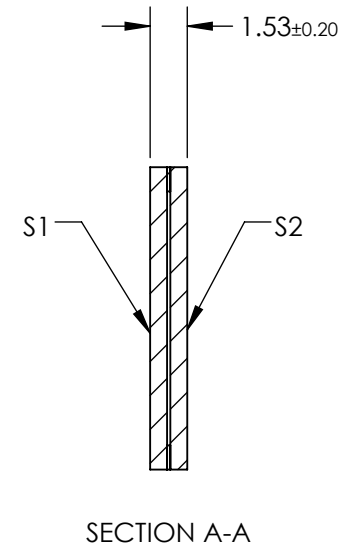
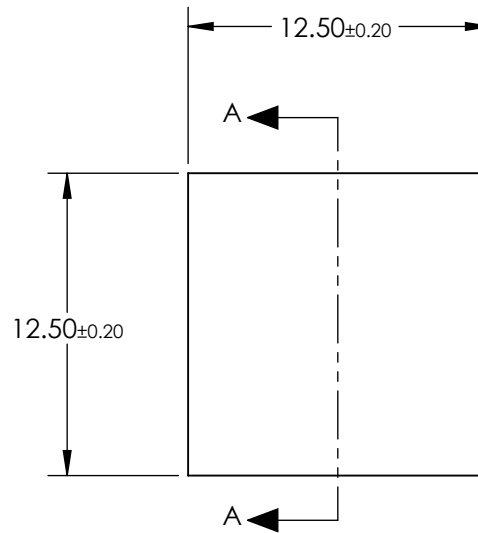


NOTES:

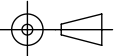
1. SUBSTRATE  
Corning Eagle XG
2. COATING (APPLY ACROSS COATING APERTURE)  
S1 & S2:  
AR: BBAR <1% Reflectance 400 - 700nm @ 0° ± 20°
3. EXTINCTION RATIO:  
100:1 @ 450nm  
200:1 @ 550nm  
340:1 @ 650nm
4. WAVELENGTH RANGE: 420 - 700nm
5. OPERATING TEMPERATURE: -40 to +200 °C
6. THERMAL EXPANSION: 31.7 x 10<sup>-7</sup>/°C
7. TRANSMISSION: 85% (TYPICAL) @ 550nm
8. TRANSMISSION TOLERANCE: ±2.5 %
9. ALIGNMENT TOLERANCE: ±1.0 °
10. CONSTRUCTION: Wire Grid
11. ROHS: COMPLIANT
12. WHEN THE REFERENCE MARK IS ORIENTATED TO THE 3 OR 9 O'CLOCK POSITION, THE TRANSMISSION AXIS RUNS LEFT TO RIGHT.



**FOR INFORMATION ONLY:  
DO NOT MANUFACTURE  
PARTS TO THIS DRAWING**

SPECIFICATIONS SUBJECT TO CHANGE WITHOUT NOTICE  
DIMENSIONS ARE FOR REFERENCE ONLY

**EO**® Edmund Optics®

	S1	S2	THIRD ANGLE PROJECTION 		TITLE	12.5mm Square Wire Grid Linear Polarizer	
SHAPE	PLANO	PLANO	ALL DIMS IN	mm	DWG NO	47101	SHEET 1 OF 1
SURFACE QUALITY	80-50	80-50					
CLEAR APERTURE	8.5 x 8.5	8.5 x 8.5					