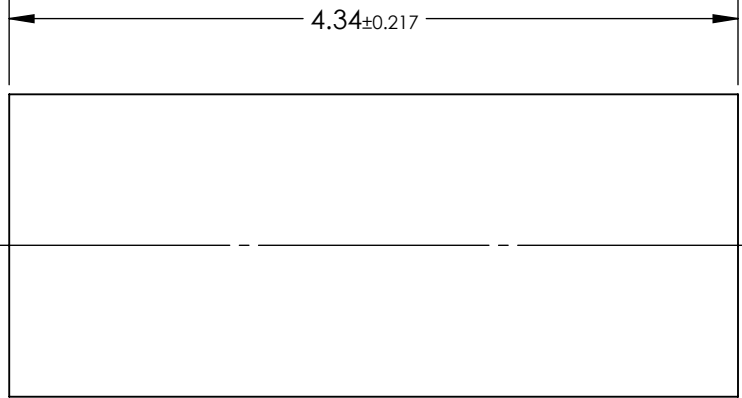
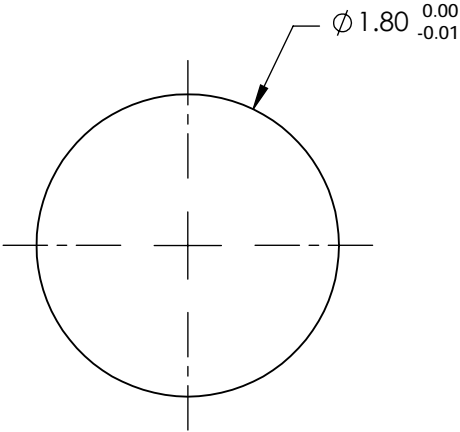


NOTES:

- 1. SUBSTRATE:
Alumoscilate Glass Embedded with Silver Ions
- 2. COATING (APPLY ACROSS COATING APERTURE)
S1 & S2: BBAR (780-840nm)
R(AVG) < 0.5% @ 810nm ±30nm
- 3. EFL: 1.71
- 4. f/# : 0.95
- 5. NUMERICAL APERTURE: 0.54
- 6. DESIGN WAVELENGTH: 810nm
- 7. WORKING DISTANCE: 0mm
- 8. ROHS: COMPLIANT



**FOR INFORMATION ONLY:
DO NOT MANUFACTURE
PARTS TO THIS DRAWING**

SPECIFICATIONS SUBJECT TO CHANGE WITHOUT NOTICE
DIMENSIONS ARE FOR REFERENCE ONLY

EO® Edmund Optics®

	S1	S2				
SHAPE	PLANO	PLANO	THIRD ANGLE PROJECTION		TITLE	1.8mm Dia, 810nm DWL, 0.0mm WD, NIR Coated, GRIN Lens
SURFACE QUALITY	40-20	40-20			DWG NO	64543
CLEAR APERTURE	Ø1.62	Ø1.62				SHEET 1 OF 1
			ALL DIMS IN	mm		