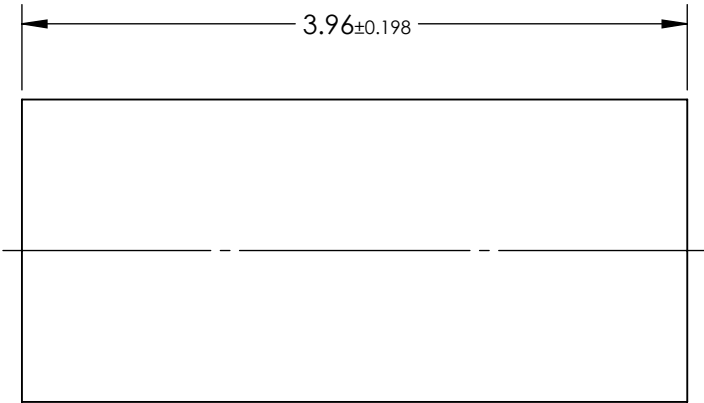
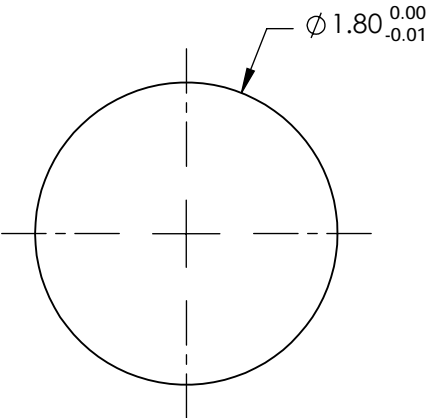


NOTES:

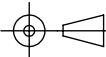
- 1. SUBSTRATE:  
Alumoscilate Glass Embedded with Silver Ions
- 2. COATING (APPLY ACROSS COATING APERTURE)  
S1 & S2: BBAR (780-840nm)  
R(AVG) < 0.5% @ 810nm ±30nm
- 3. EFL: 1.72
- 4. f/# : 0.96
- 5. NUMERICAL APERTURE: 0.52
- 6. DESIGN WAVELENGTH: 810nm
- 7. WORKING DISTANCE: 0.23mm
- 8. ROHS: COMPLIANT



**FOR INFORMATION ONLY:  
DO NOT MANUFACTURE  
PARTS TO THIS DRAWING**

SPECIFICATIONS SUBJECT TO CHANGE WITHOUT NOTICE  
DIMENSIONS ARE FOR REFERENCE ONLY

**EO<sup>®</sup> Edmund Optics<sup>®</sup>**

	S1	S2	<div>THIRD ANGLE PROJECTION</div> 		TITLE	1.8mm Dia, 810nm DWL, 0.23mm WD, NIR Coated, GRIN Lens	
SHAPE	PLANO	PLANO					
SURFACE QUALITY	40-20	40-20	<div>ALL DIMS IN</div> <div>mm</div>		DWG NO	64544	
CLEAR APERTURE	Ø1.62	Ø1.62					